

Mike Hodzman Memorial Lecture

Department of Emergency Medicine Grand Rounds

April 09, 2015

0900 to 1030

Coombs Theatre - FMC

Session One: (9:00 – 9:45)

Is this Headache a Subarachnoid Hemorrhage?

Session Two: (9:45 – 10:30)

How to Identify Patients at High Risk for a Subsequent Stroke

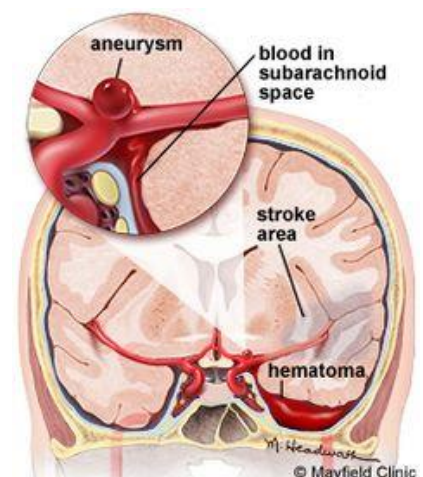
Moderator & Case Presenter:

Adrian Millman, Resident, CCFP-EM

Guest Speaker:

Jeff Perry, MD, MSc, CCFP-EM

The Ottawa Hospital
Ottawa Research Institute



- Senior Scientist, Clinical Epidemiology Program
- Associate Professor, Dept. of Emergency Medicine, University of Ottawa
- Research Chair in Emergency Neurological Research
- Emergency Physician

Mark the date
April 09, 2015