

## ■ Guiding Principles

- Recognition of the contribution to graduate students own research to the research mission of the university
- Contribution to teaching and faculty research
- Student support – adequate stipends allow students to devote themselves to their graduate program full-time

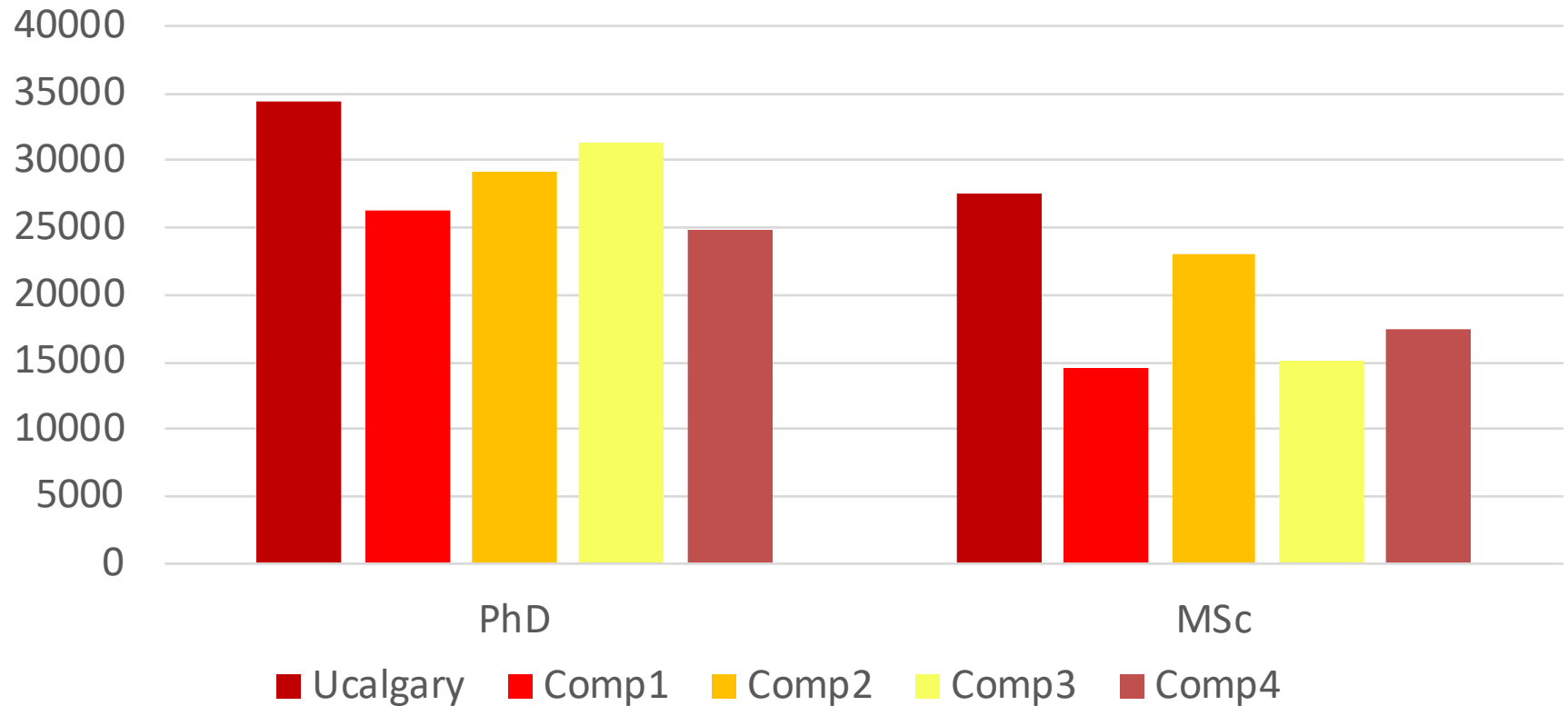
- Establish a minimum stipend for students across all programs
- Increase consistency across programs by requiring a program level funding policy
- Increase consistency within programs by ensuring similar treatment of students
- Enhance transparency for students/prospective students by requiring programs to clearly articulate the composition of funding packages

- Establish a program set minimum for PhD students that meets or exceeds FGS minimum (\$18K domestic students and \$22K for international)
- Clearly articulate sources of funding
- Clearly articulate how Graduate Assistantships are treated relative to minimum funding level
- Clearly articulate impact of winning scholarship support
- Clearly articulate conditions that must be met for funding to be continued
- Remind students they are responsible for paying tuition and fees

- establish a Program-Set Minimum Masters Funding Level
- require students to apply for major external scholarships for which they are eligible as a condition of continuing their funding
- address the timing of payments relative to meeting the Student's Guaranteed Minimum Funding Amount

- Over the past 18 months
  - 2 Faculty of Graduate Studies Funding Retreats
  - MIID, PP, BMB, CHS, CBA departmental meetings
  - CFD meetings
  - Multiple faculty GEC meetings – graduate program directors and student representatives
  - Individual faculty and student meetings/consultations

## Health Sciences



- MSc domestic – no external Support
  - Standard - \$21,000
  - Maximum - \$28, 000
- PhD domestic– no external Support
  - Standard - \$23, 000
  - Maximum - \$33, 000
- International Tuition Award
  - \$4100 first year MSc, PhD pre-candidacy
  - \$1200 MSc past first year, PhD post-candidacy
- \* exclusions would be program level (FGS funds) entrance awards for students paying full fees, and GATs (with exception of CHS)
- Everyone needs to get at least the standard
- Amounts will be reviewed minimum every 3 years
- Guarantee of funding for 2.5 yrs/MSc and 5 yrs/PhD
- Cases can be made to the Associate Dean – GSE to exceed the maximum funding level under exceptional circumstances and for GATs when the student is greater than 4 years in PhD or 2 years in an MSc.

- “Top-Ups”
- \$0-\$3000 - There will be no top-up but the student gets to keep the award(s), up to a combined maximum of \$3,000. The amount of the award will not be deducted from the base funding.
- \$3001-\$10,000 (cumulative awards) - Award goes towards the base funding and the student receives a \$3,000 top-up over their base funding.
- \$10,001-15,000 (cumulative awards) - Award goes towards the base funding and the student receives a \$4,000 top-up over their base funding.
- Over \$15,000 (cumulative awards) - Award goes towards the base funding and student receives a \$5,000 top-up over their base funding.
- Up to a maximum of \$33,000 for MSc students and \$38,000 for PhD students
- Exclusions – TOR for specific scholarship i.e. CSM where 20K+10K or ACHRI which is 11.5K=11.5K