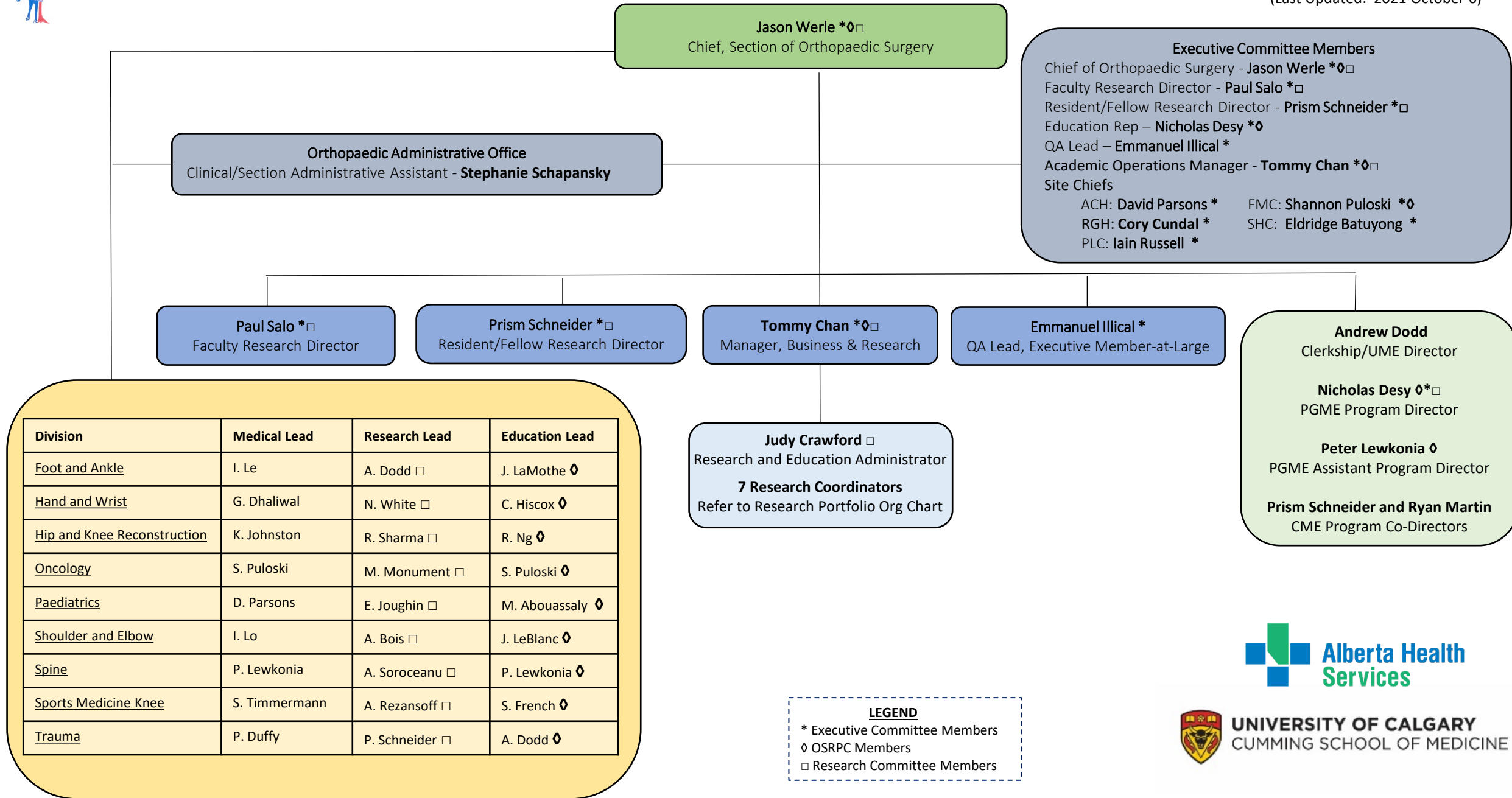




Organizational Chart - Section of Orthopaedic Surgery

(Last Updated: 2021 October 6)



Executive Committee Members
 Chief of Orthopaedic Surgery - Jason Werle *◇□
 Faculty Research Director - Paul Salo *□
 Resident/Fellow Research Director - Prism Schneider *□
 Education Rep – Nicholas Desy *◇
 QA Lead – Emmanuel Illical *
 Academic Operations Manager - Tommy Chan *◇□
Site Chiefs
 ACH: David Parsons * FMC: Shannon Puloski *◇
 RGH: Cory Cundal * SHC: Eldridge Batuyong *
 PLC: Iain Russell *

Paul Salo *□
Faculty Research Director

Prism Schneider *□
Resident/Fellow Research Director

Tommy Chan *◇□
Manager, Business & Research

Emmanuel Illical *
QA Lead, Executive Member-at-Large

Andrew Dodd
Clerkship/UME Director

Nicholas Desy *◇□
PGME Program Director

Peter Lewkonian *◇
PGME Assistant Program Director

Prism Schneider and Ryan Martin
CME Program Co-Directors

Judy Crawford □
Research and Education Administrator
7 Research Coordinators
 Refer to Research Portfolio Org Chart

Division	Medical Lead	Research Lead	Education Lead
Foot and Ankle	I. Le	A. Dodd □	J. LaMothe ◇
Hand and Wrist	G. Dhaliwal	N. White □	C. Hiscox ◇
Hip and Knee Reconstruction	K. Johnston	R. Sharma □	R. Ng ◇
Oncology	S. Puloski	M. Monument □	S. Puloski ◇
Paediatrics	D. Parsons	E. Joughin □	M. Abouassaly ◇
Shoulder and Elbow	I. Lo	A. Bois □	J. LeBlanc ◇
Spine	P. Lewkonian	A. Soroceanu □	P. Lewkonian ◇
Sports Medicine Knee	S. Timmermann	A. Rezansoff □	S. French ◇
Trauma	P. Duffy	P. Schneider □	A. Dodd ◇

LEGEND
 * Executive Committee Members
 ◇ OSRPC Members
 □ Research Committee Members

