



tPA in the CT at the University of Alberta Hospital, Edmonton, AB

Nov 24, 2015

Thomas Jeerakathil BSc, MD, MSc, FRCP(C), FABN
Associate Professor
Division of Neurology
University of Alberta
Northern Stroke Lead CV/S SCN, AHS
Medical Lead and Co-Chair, Stroke Action Plan

Faculty/Presenter Disclosure

[Thomas Jeerakathil]

Grants/Research Support: CIHR, HSFC, CSN, AIHS, AHS, Alberta
Health

Speakers Bureau/Honoraria: BMS Pfizer Single Ad Board Meeting

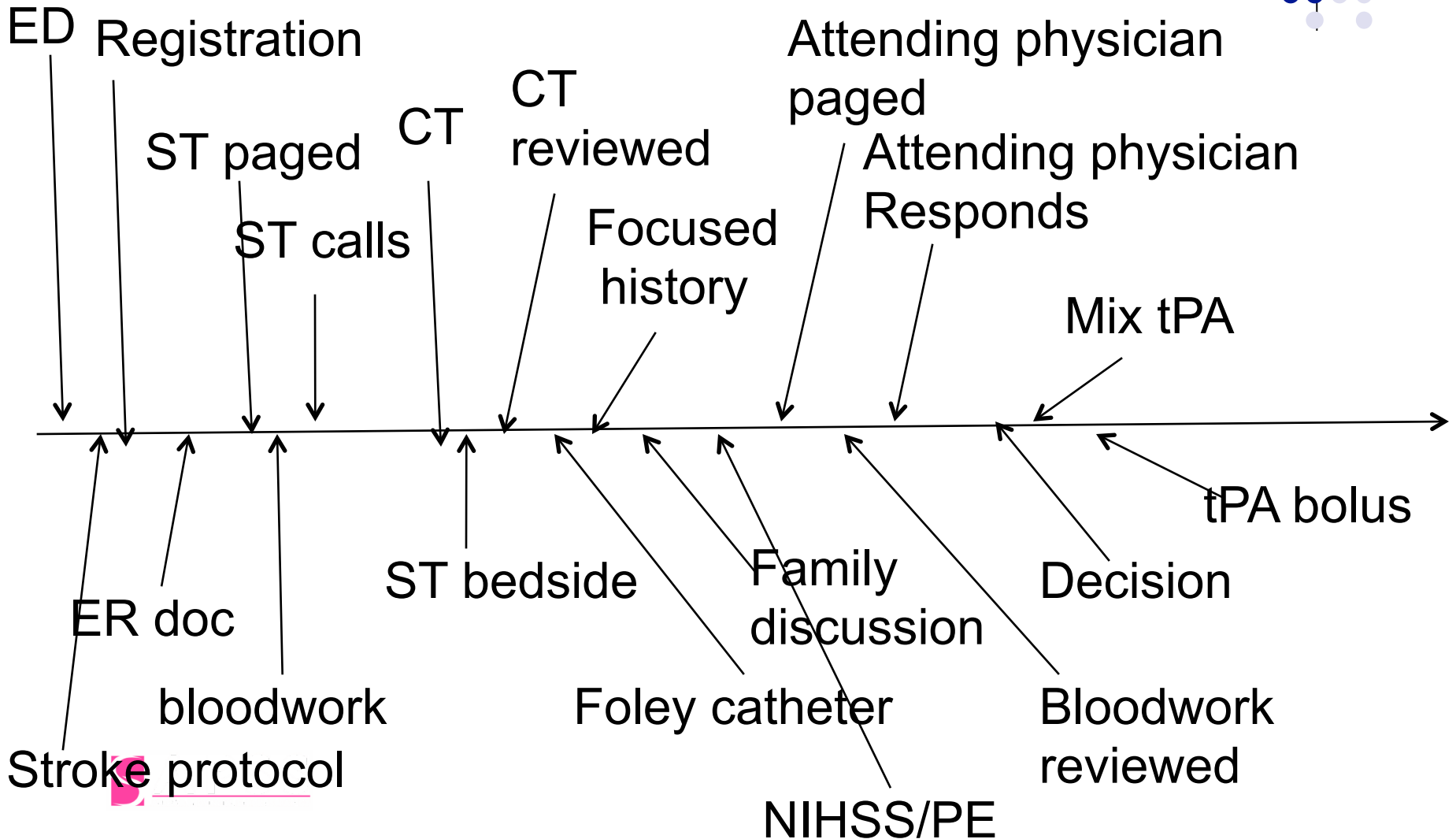
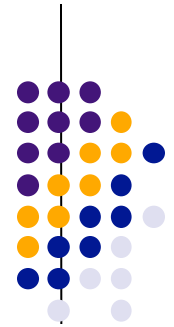
Consulting Fees: N/A

Other: N/A

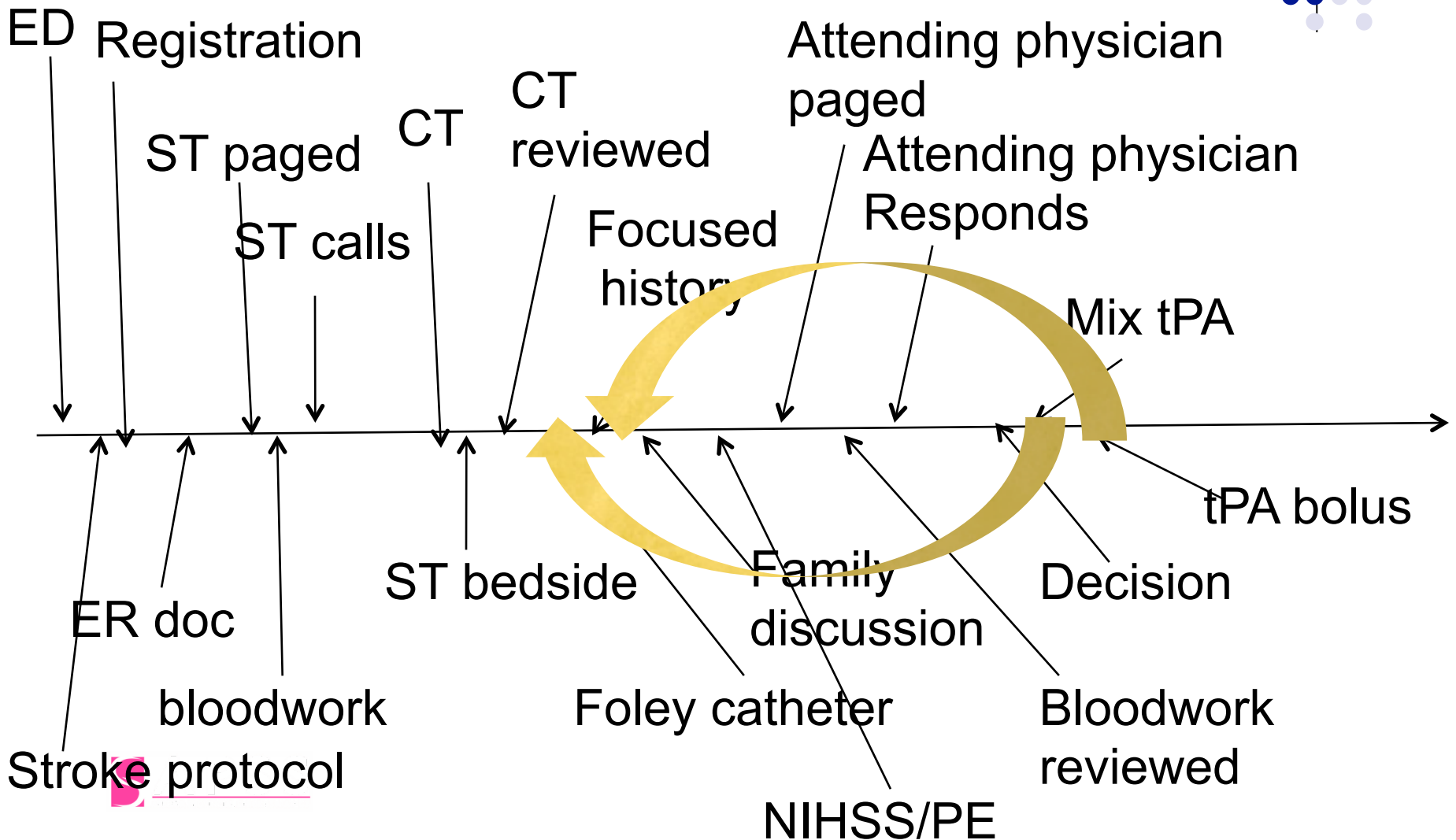
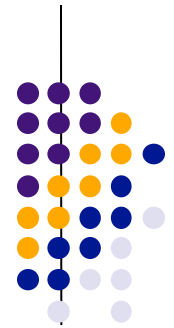
Objectives

- To discuss the process for tPA in the CT scanner at the UAH

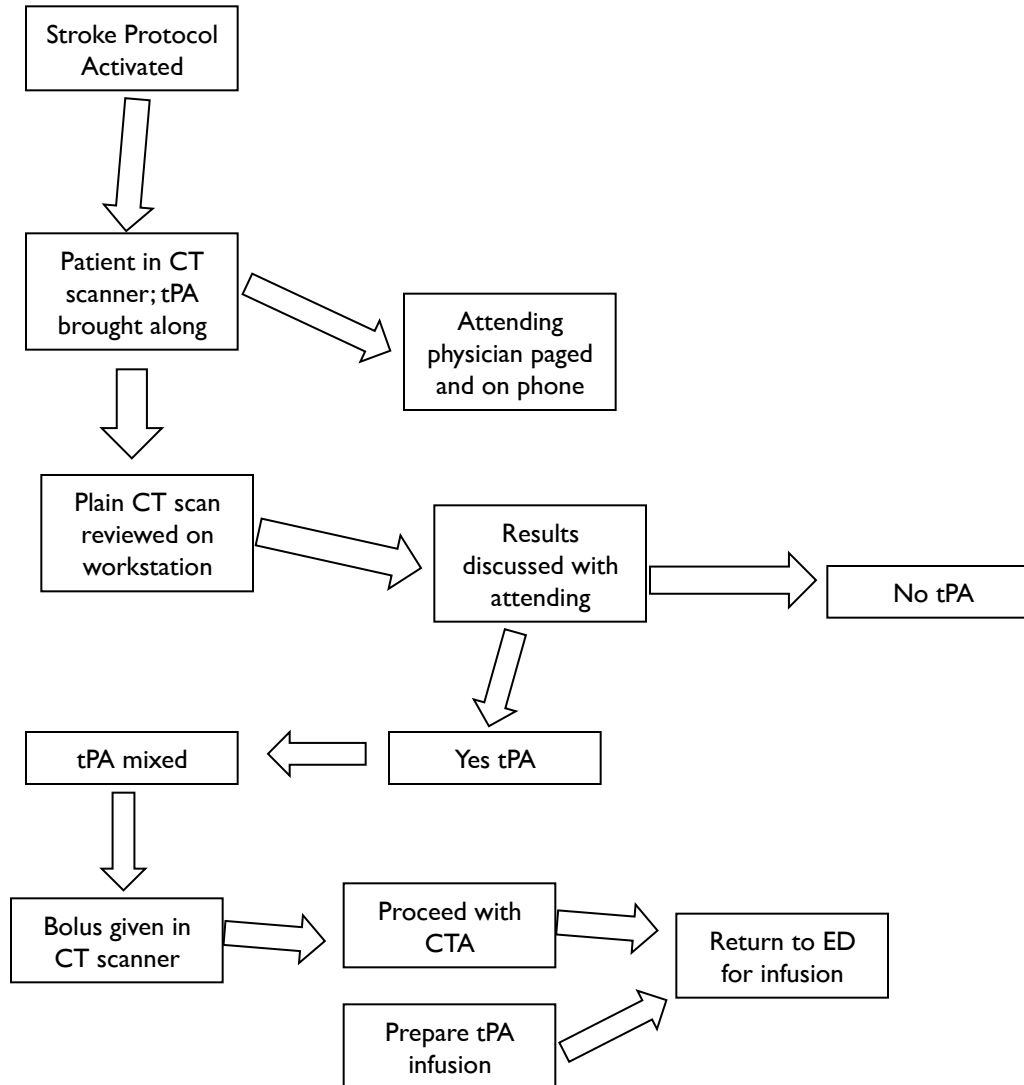
Timelines in tPA use



Timelines in tPA use



tPA in the CT scanner



Technology: CT Angiogram – sometimes slows DTN but important information if done fast!

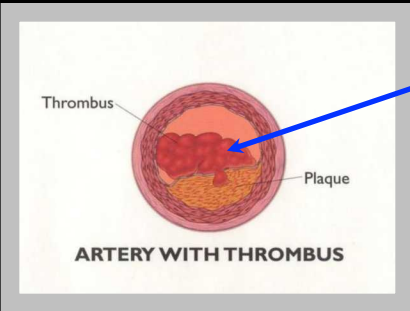
CTA speed is highly centre dependent
Ideally the first scan is a rapid CT+CTA.
Sometimes it makes more sense to initiate tPA with a plain CT then proceed afterwards with CTA.
At UAH we give the bolus in scanner after plain CT and then go to CTA



Patient 2

Clot visible blocking the middle cerebral artery (inside artery)

Thrombus resolved after IV tPA



Monica made an excellent recovery !

Results- Go for the Gold!



Summary

- Fast treatment saves brain, reduces disability and reduces complications
- Treating with tPA in the scanner is feasible and faster at some centres

Thank-you!

Edmonton Zone Stroke Program

-Mary Lou Halabi, Shy Amlani, Colleen Taralson

ED – Margaret Dymond, Karen Latoshek

Stroke Fellows!

Diagnostic Imaging

Laboratory Services

Quality Improvement

Noreen Kamal, Michael Hill