



Telestroke Process with Consideration of Transport for EVT

Learning Session 3

March 8 2016

Calgary, AB



UNIVERSITY OF ALBERTA
FACULTY OF MEDICINE & DENTISTRY

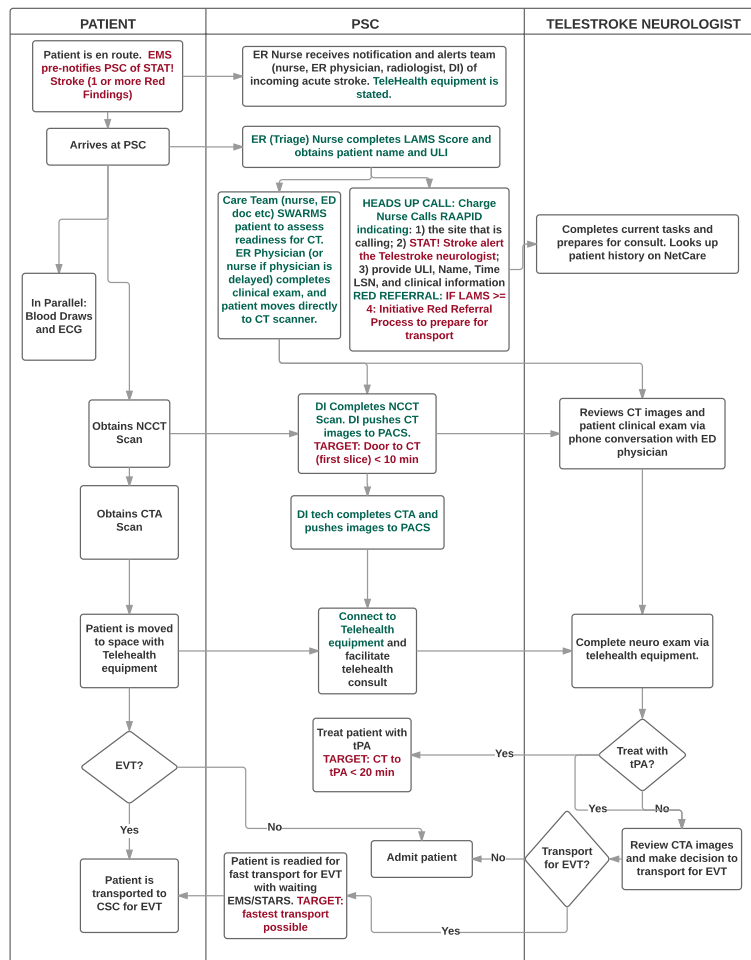


UNIVERSITY OF CALGARY
CUMMING SCHOOL OF MEDICINE

Overall Process – In Your Package

ACUTE STROKE NEUROLOGY CONSULT

QuiCR January 2016

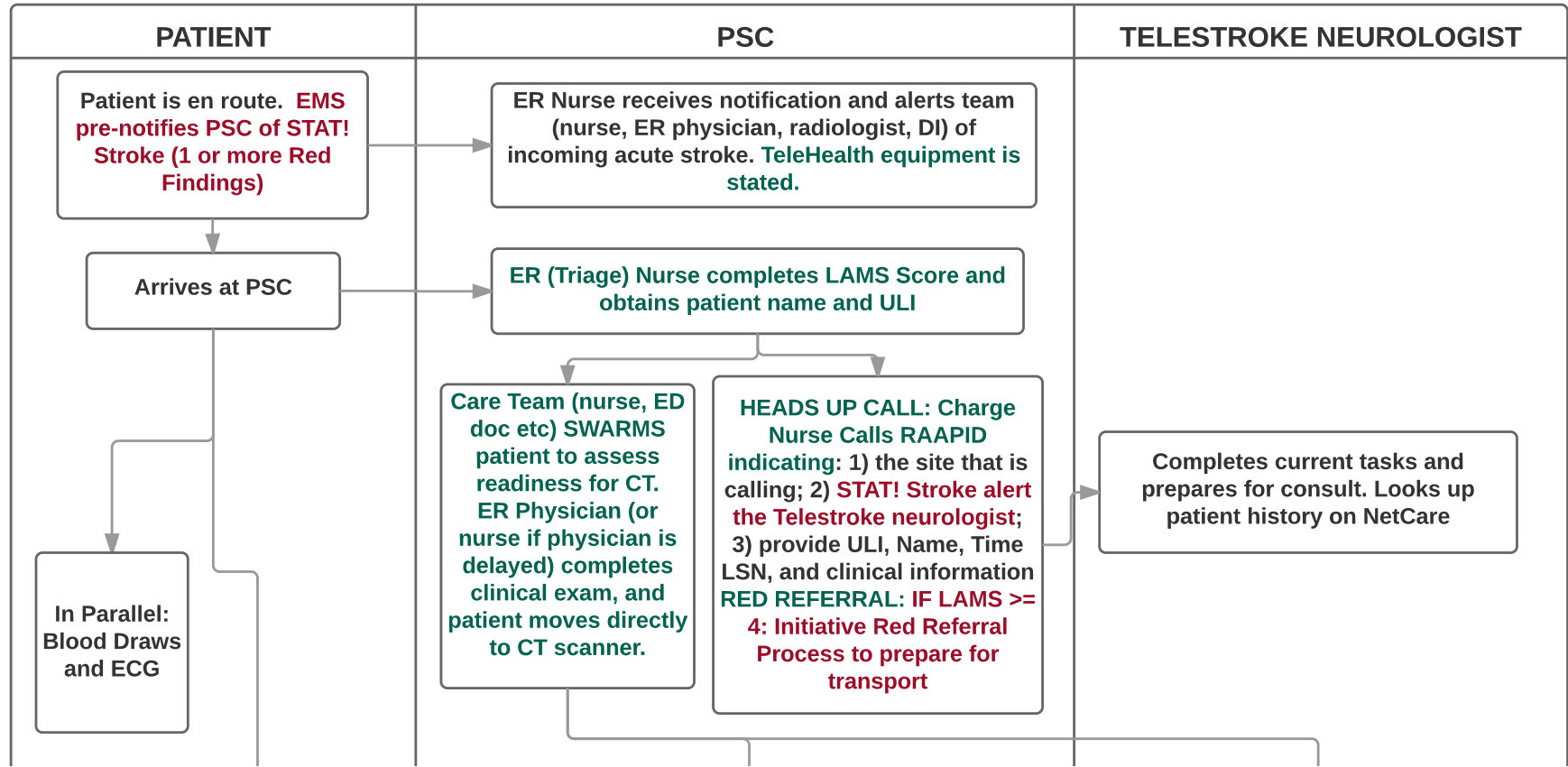


Arrival and Heads up
To RAAPID with LAMS

Imaging
Direct to CT
NCCT -> Push images
CTA -> Push imagea

Telestroke and decision
to treat with tPA and/or
transport for EVT

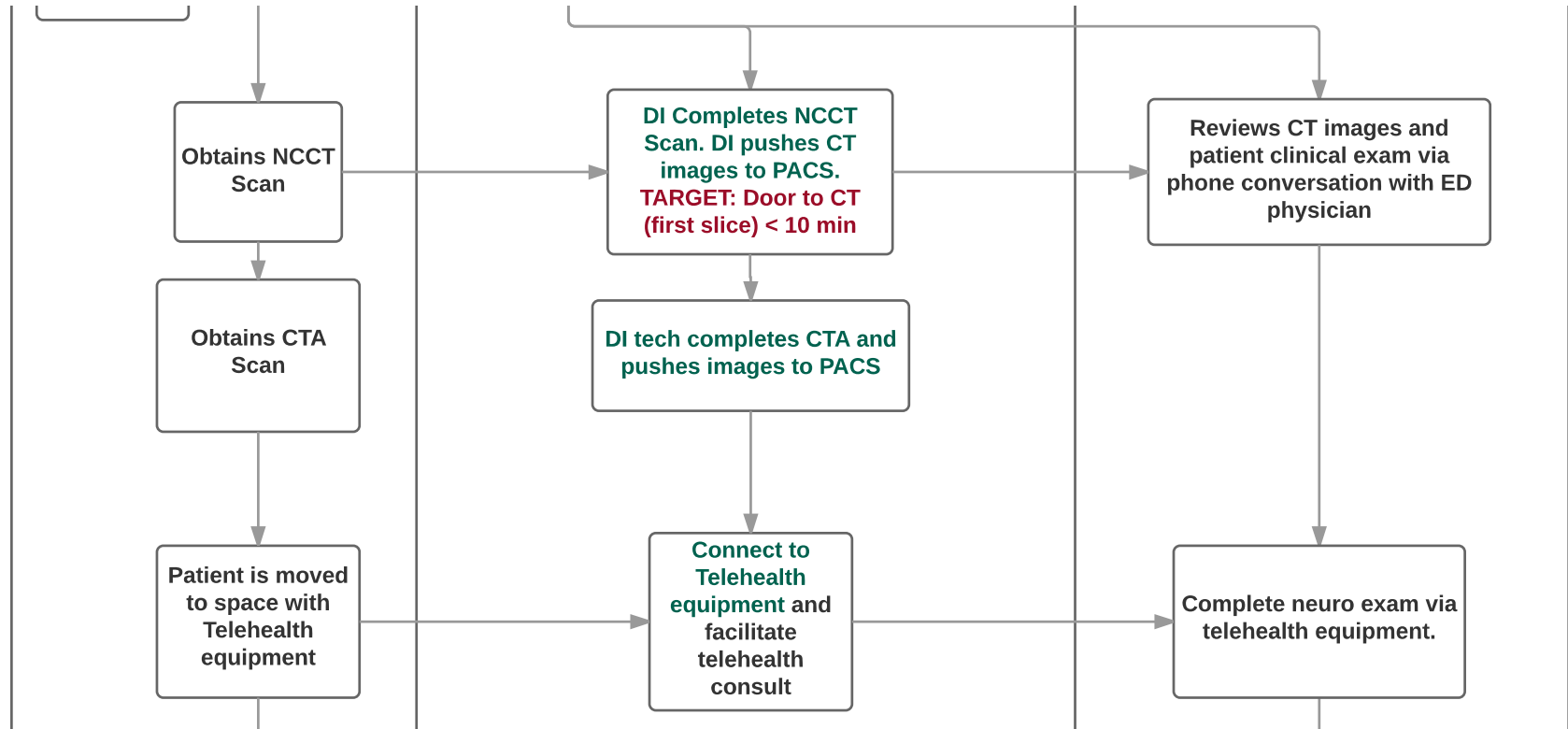
Arrival and Heads Up Call (LAMS at Triage)



LAMS Scoring

| Item | Score | Description |
|-------|-------|------------------------------------|
| Face | 0 | Both sides move normally |
| | 1 | One side is weak or flaccid |
| Arm | 0 | Both sides stay up |
| | 1 | One side is weak (drifts downward) |
| | 2 | One side is flaccid/does not move |
| Grip | 0 | Both sides are strong |
| | 1 | One side is weak (drifts downward) |
| | 2 | One side is flaccid/doesn't move |
| Total | 0-5 | |

Imaging – NCCT and CTA



Treating with tPA and Transport

