



Introducing the Clinical Inquiry Newsletter! A quick way to catch up on the latest progress for **Research** and **Analytics** functionalities within Connect Care. Watch for this newsletter coming to you on a monthly basis. You can also find this information in the [Clinical Inquiry Blog](#) located on SharePoint.

RESEARCH – General Connect Care Updates

Connect Care Nomenclature Change

To reduce confusion between COVID-19 waves and the waves associated with the implementation of Connect Care, AHS leadership has made the decision to revise how everyone refers to the rollout of Connect Care.

Going forward, each implementation in the sequence will be referred to as a **launch**.

- **Connect Care Launch 4**
- **Connect Care Launch 5**
- **Etc.**

Launch 4 – Date Change

Given the significantly increasing demands on the provincial healthcare system related to COVID-19, AHS leadership has made the decision to alter the Launch 4 date. This will allow frontline staff and support teams to have the necessary time they need to prepare for launch.

Therefore, to provide additional time to help get teams and sites ready for launch, Launch 4 has been scheduled for **May 28, 2022**.

Connect Care continues to be one of AHS's highest organization priorities and is not being cancelled. These changes allow AHS to be strategic with resources and respectful of the demands on staff and physicians as they continue to protect the people of this province.

RESEARCH – Important Upcoming Events!

Are you a research end user that is new to Connect Care and want to learn more, or an existing user that would like a refresh? Please read on for some upcoming events that may be of interest to you! You can sign up by sending a request to: cc.research@ahs.ca. There are a number of upcoming events (as per the following) with dates to be determined.

- **A Day in the Life a Research Coordinator**
- **A Day in the Life of a Principal Investigator**
- **Introduction to Research Conversion: Part 1**
- **Research Conversion: Part 2**

RESEARCH – Training Updates

SEUPA (Simulation End User Proficiency Assessments) will be replacing the EUPA (End User Proficiency Assessment) starting Feb 14, 2022. SEUPAs are a better indicator of Connect Care proficiency than a EUPA. It is an in-system assessment that assesses workflows and accurate use of the system.

- Users who completed training for Launch 4 in 2021 can challenge the SEUPA rather than repeat the in-class training for access. For users affected by this change, more information regarding the process will be sent Feb 14, 2022.

RESEARCH – Research Staff ILT: Virtual Training Dates

- Operational monthly training sessions
 - Feb 8-9, 2022 - 8am-12pm
 - Mar 8-9, 2022 - 8am -12pm
- Additional dates for Launch 4 users will be provided during the course enrollment process. Communication regarding the registration process will be sent mid to late February.

REPORTING and ANALYTICS New Analytics Community of Practice!

The last Health Analytics and Business Intelligence (HABI) Community of Practice (CoP) Session was held on December 16, 2021 and the last CC Data & Analytics CoP was held Sept. 2, 2021. Both meeting series will now be replaced by the Analytics at Work Community of Practice, which is a joint effort between Data & Analytics and the Clinical Operations Informatics Office.

The new CoP provides an opportunity for analysts of all types, operational managers, safety teams, quality teams, Clinical Operations teams, embedded analysts as part of any team, etc., to access specific analytics topics twice a month on an ongoing basis. This new CoP will promote the use of data for assessing/improving system adoption; data quality; and using data to achieve operational best practices. Ultimately, this CoP provides a forum for interprofessional collaboration, a key component in a developing and supporting a Learning Healthcare System.

The Analytics at Work CoP sessions are offered via Zoom in a lunch and learn-style (12:00-1:00pm) on the second and fourth Tuesdays of each month, beginning in February 2022.

Cont'd on next page...



REPORTING and ANALYTICS - New Analytics Community of Practice! – *continued...*

Topics differ between the second and fourth Tuesday sessions:

- **Second Tuesday:** Topics determined by AHS Data & Analytics and geared specifically to AHS Analysts and EDWS Clarity and Caboodle Users, but all are welcome to attend.
- **Fourth Tuesday:** Topics determined by Clinical Operations Informatics Office Team and designed for a broad audience – particularly operationally-embedded analysts in any AHS department, and will focus on the use of Connect Care reporting and analytics functions.

For more information about upcoming sessions and topics, go to:

- [Analytics at Work CoP - Home \(ahsnet.ca\)](https://ahsnet.ca).
- To be added to the distribution list for Analytics at Work CoP sessions, please email: EDWSAdministration@ahs.ca

RESEARCH – Announcements, Reminders, and Updates

NACTRC Announcement – NEW AHS Data Disclosure Agreement (DDA) Process via NACTRC for Edmonton Zone Researchers

Since 2017, the AHS Data Disclosure Agreement (DDA), processed by the Health System Access (HSA) team, has been a component of the NACTRC Administrative Approval. This initiative to integrate HSA and NACTRC processes will create a single-point access for researchers to monitor their resources for study initiation.

Effective February 1, 2022, Edmonton Zone researchers will be notified by NACTRC's Research Administration Application (ENCAPS) to submit their AHS data request. The AHS DDA process will be initiated upon REB approval. If your study receives REB approval after February 1, 2022, please monitor your email inbox for instructions to submit the AHS Data Approval request.

For questions or feedback, please contact Research.Administration@ahs.ca.

Important Research Charge Review Reminder

Complete the **RESEARCH CHARGE REVIEW** workflow for your research studies. Currently there are over 1500 patient encounters requiring charge review, affecting the ability of AHS's Finance team to reconcile the Standard of Care charges; some of these charges have been pending review for over a year. To ensure the charge review for your study is up-to-date, follow the [Research Charge Review](#) guide. If when running the *Total Balance Needing Research Review* from your Connect Care Research Coordinator Dashboard, either the *Total Balance* or *# of Patients* are higher than 0, that indicates there are pending charge reviews for your studies. Please complete this workflow at least once weekly.

External Study Monitors Update

External study monitors (ESM) have been using the Connect Care Provider Portal (CCPP) to review patient chart information since Connect Care Launch 1. Although many are successfully completing their monitor through the portal, the functionality is not working as expected for a considerable number of users.

The Connect Care Support Team for Research is working on improving this workflow. To facilitate the required repairs, **effective February 1, 2022**, access for **new ESM** will be temporarily disabled. Access for existing ESM successfully using the CCPP will remain. Existing ESM having access issues and new users are instructed to utilize the Over the Shoulder approach in person or via Zoom. Study teams are encouraged to connect with their respective ESM to decide on the best approach. The Connect Care Support Team for Research expects to re-establish the intended workflow by the Connect Care Launch 4.



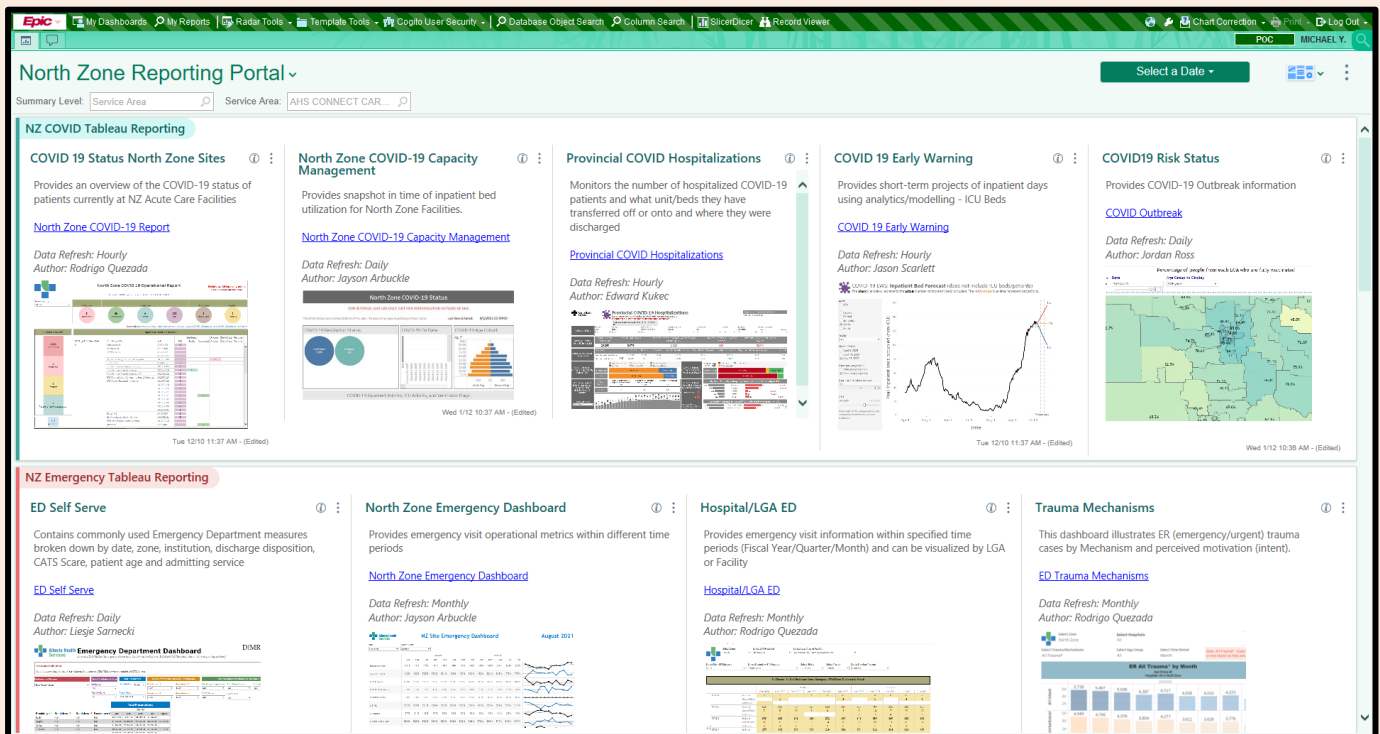
Connect Care

Clinical Inquiry Newsletter – January 2022

REPORTING and ANALYTICS – New North Zone Reporting Portal

On December 8, 2021, the *North Zone Reporting Portal* for Connect Care was made available to all users in the system.

The *North Zone Reporting Portal* for Connect Care was created as a convenient way to distribute content that is relevant to users within the organization especially within the North Zone. The creation of this Dashboard is the result of the collaborative efforts of North Zone Data and Analytics and the Cogito IT Connect Care Team.



REPORTING and ANALYTICS – Training Update and Reporting Resources

Introduction to SlicerDicer ILT is now available on MyLearningLink. Register today!

- [Connect Care Reporting Training Poster](#)
- [Connect Care In-system Reporting Resources \(albertahealthservices.ca\)](#)
- Link to latest Cogito Training update and statistics, [here](#).

Any questions, comments, or requests, please contact:

ConnectCare.ReportingSupport@ahs.ca OR connect.carelearning@ahs.ca



Questions? CC.Research@ahs.ca and/or ConnectCare.ReportingSupport@ahs.ca



Connect Care

Clinical Inquiry Newsletter – January 2022

RESEARCH – Important Links

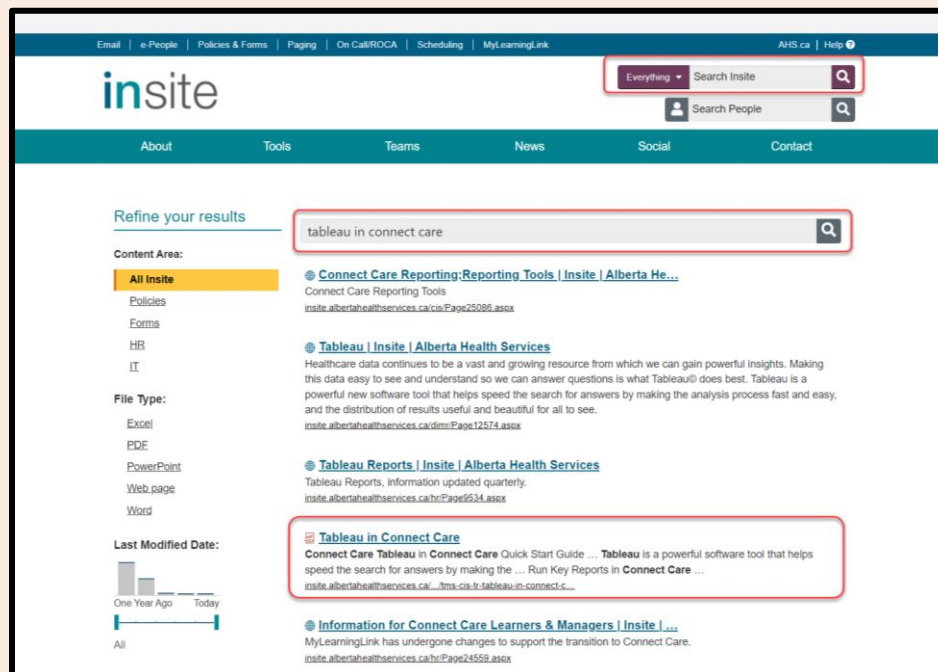
For further reading on Connect Care Inquiry and Research, we encourage you to read the following:

- [Getting Started with Connect Care for Research](#)
- [CC Research Coordinator Checklist_Final_28Sep2021.pdf \(ahsnet.ca\)](#): List of steps your study team may need to take in order to get ready for Connect Care.
- [CC Research Training Requirements and Sequencing_Final_28Sep2021.pdf \(ahsnet.ca\)](#): Information on the training requirements and sequencing for the Research module in Connect Care.
- [Clinical Department Research Readiness Tip Sheet](#)
- [Connect Care Charting Etiquette \(ahsnet.ca\)](#): This document provides you with the Connect Care expectations for research in terms of which workflows are expected to be completed in system, why it is important to do so and how they can be completed.
- [Connect Care Glossary \(albertahealthservices.ca\)](#)
- [Connect Care Frequently Asked Questions](#)
- [Provincial Health System Access - Home \(ahsnet.ca\)](#) All research stakeholders (including non-AHS employees) can access an assortment of Connect Care research related information.

REPORTING and ANALYTICS -

The [Tableau in Connect Care Quick Start Guide \(albertahealthservices.ca\)](#) was approved on January 14, 2022, Friday by the editorial review panel for wide distribution.

- 1) The link can be found in all Reporting Content Guides
- 2) It will be linked in the Cogito Learning Home Dashboard.



It is also searchable by typing key words “tableau connect care” on Insite and in the [Connect Care Training Library](#)

Questions? CC.Research@ahs.ca and/or ConnectCare.ReportingSupport@ahs.ca