



**Introducing the Clinical Inquiry Newsletter!** A quick way to catch up on the latest progress for **Research** and **Analytics** functionalities within Connect Care. Watch for this newsletter coming to you on a monthly basis. You can also find this information in the [Clinical Inquiry Blog](#) located on SharePoint.

### RESEARCH – Readiness Webinars

The Connect Care Support Team for Research typically offers webinars on the 3<sup>rd</sup> Monday of each month on various topics such as getting ready for launch, research conversion and the use of Connect Care to complete research-related activities. All sessions include time at the end where you and your team can ask questions about the Connect Care Research module. If you are not receiving the webinar invites, you can sign up by sending a request to: [cc.research@ahs.ca](mailto:cc.research@ahs.ca).

- Next Webinar: June 21, 2021, 12:00 – 1:00pm.
- Topic: A Day in the Life of Principal Investigator in Connect Care

### RESEARCH – Research Staff Virtual Training Dates

- June 2 & 3, 2021, 8:00 – 12:00pm
- July 21 & 22, 8:00 – 12:00pm
- July 26 & 27, 8:00 – 12:00pm
- July 29 & 30, 8:00 – 12:00pm
- August 3 & 4, 8:00 – 12:00pm
- August 9 & 10, 8:00 – 12:00pm
- August 12 & 13, 8:00 – 12:00pm
- August 16 & 17, 8:00 – 12:00pm
- August 23 & 24, 8:00 – 12:00pm
- August 30 & 31, 8:00 – 12:00pm
- September 13 & 14, 8:00 – 12:00pm
- September 28 & 29, 8:00 – 12:00pm

### Important Links

- [Getting Started with Connect Care for Research](#)
- [CC Research Wave 4 Research Coordinator Checklist](#)
- [Wave 4 Research Training Requirements and Sequencing](#)
- [Clinical Department Research Readiness Tip Sheet](#)
- [Connect Care Frequently Asked Questions](#)

### RESEARCH – Getting Started with Connect Care!

The **Health System Access** Team supports the administration of clinical research studies (post ethics approval) requiring access to AHS' provincial data or network resources, administrative departments and/or operational areas. Please review page 2 of this newsletter to view an infographic for a 'Workflow of Research in Connect Care'.

- [Provincial Health System Access - Home \(ahsnet.ca\)](#)

Additionally, there are a number of tip sheets and research guidance documents located on the Connect Care 'Research Coordinator Learning Home Dashboard' to help teams set up study records and manage research day to day activities.

Research Coordinator Learning Home Dashboard

**What's New**

What's New

There are no posts to show.

**General Resources**

**Research Guides**

- ✓ Guides
  - Update Study Records
  - Manage Research Study Patients
  - Link Encounters to Studies
  - Research Orders
  - Investigational Blood Products
  - Tracking Research Study Amendments
  - Patient Study Timelines
  - Reporting Content Guide
  - Personalization
- ✓ Tip Sheets
  - Preparing for a CIU Visit
  - Document Adverse Events
  - Accessing the OR Status Board and ED Track Board
  - Using SmartSets
  - Uploading Research Consent Forms

### REPORTING and ANALYTICS – Updated version of AHS Data and Analytics Roadmap

The Data and Analytics Roadmap outlines AHS' plans to address strategic data gaps, develop the skills of our people, modernize technology, and begin to optimize analytics within Connect Care. The specific strategies and deliverables are detailed in the [AHS Data & Analytics Roadmap 2.0](#), which was recently approved by the Data & Analytics Executive Committee.

### Virtual Office Hours for Wave 5 Reporting Role Assignment

Watch for Virtual Office Hours (VOH) sessions to guide Managers in completing Reporting Role Assignment coming up May 31 and June 2. These sessions will outline the types of Reporting Roles available and assist managers and individuals in selecting the role that best meets their reporting and analytics needs.

More information and a schedule for upcoming Wave 5 VOH sessions is available on [Insite](#).

### Learning Home Dashboards now available to all Connect Care Users!

As of May 25<sup>th</sup>, All Connect Care Users will be able to access any Learning Home Dashboard in the Analytics Catalogue, regardless of their role. Click [here](#) for information about accessing Learning Home Dashboards in Connect Care.

Questions? [CC.Research@ahs.ca](mailto:CC.Research@ahs.ca) and/or [ConnectCare.ReportingSupport@ahs.ca](mailto:ConnectCare.ReportingSupport@ahs.ca)



# Connect Care

## Clinical Inquiry Newsletter – May 2021

### REPORTING – Epic XGM – 2021

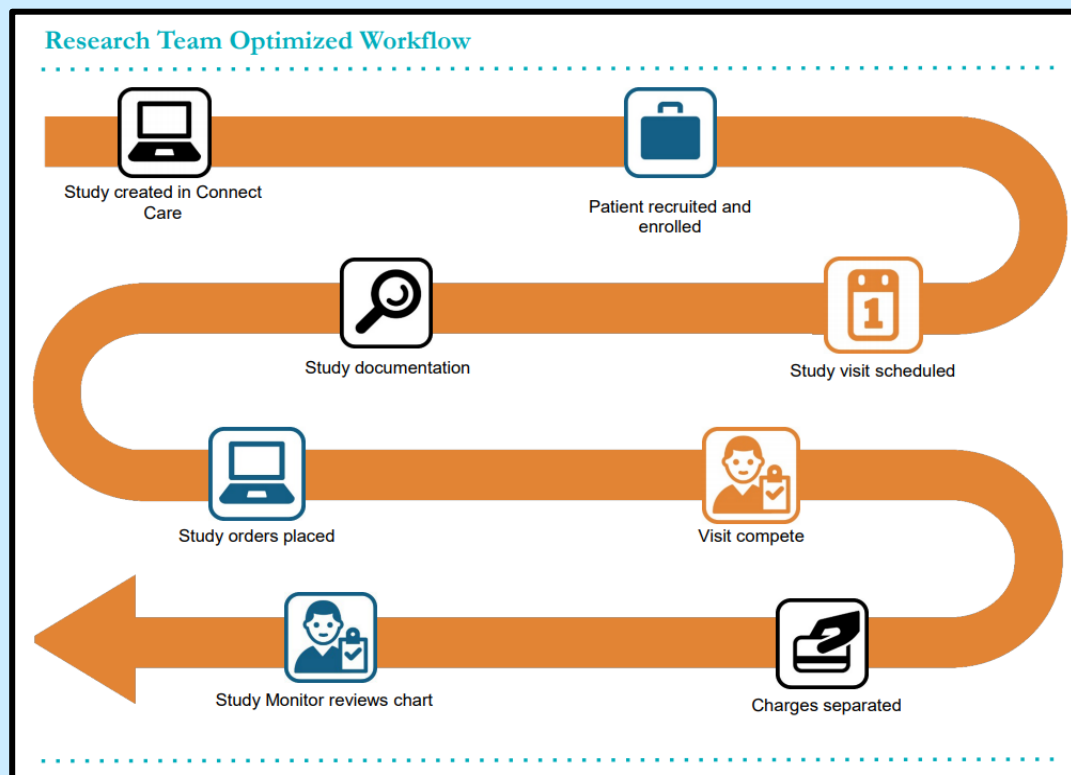
Every year Epic holds Experts' Group Meeting (XGM) to give its customers an opportunity to submit ideas for improvements to the system and select those that their organization would like Epic to focus on for further research and development. As you may be aware, the in-person Epic XGM has been cancelled the past two years and is now offered in a virtual format. Epic hosted focus groups in each of the different application areas earlier in May for their customers. Recordings of these sessions are available. Participants need to register for XGM to have access to the recordings:

- Week 1 recordings available May 3-21
- Week 2 recordings available May10-21

You can review ideas that have been submitted by logging in to the Epic Userweb: <https://ideas.epic.com> and selecting the application of your choice. You can sort the ideas by numbers of likes to see the most popular ones. Voting takes place starting June 1 and ending on June 30. Many areas will convene stakeholder representatives to discuss and shortlist the ideas submitted for their respective applications, prior to voting. Designated voters from each area will cast votes (5-10, depending on the application) on behalf of their teams.

Questions about XGM can be sent to any one of AHS's three ballot coordinators – listed at the top of the *ideas.epic* Webpage.

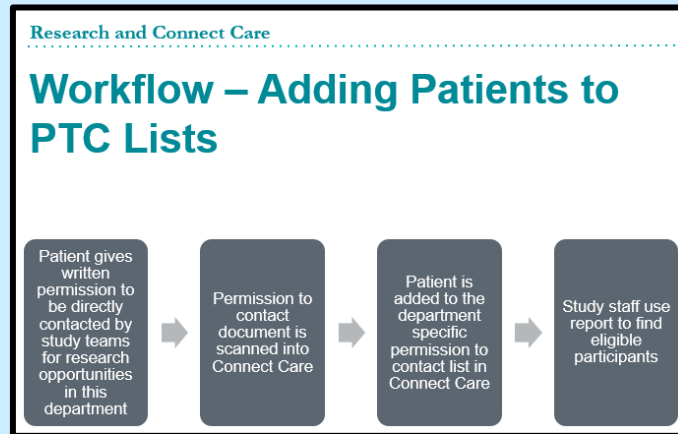
### RESEARCH – Workflow of Research in Connect Care Infographic



Questions? [CC.Research@ahs.ca](mailto:CC.Research@ahs.ca) and/or [ConnectCare.ReportingSupport@ahs.ca](mailto:ConnectCare.ReportingSupport@ahs.ca)



### RESEARCH – What is New? Setting up Department Specific Permission to Contact (PTC) Lists



#### Setting up Department Specific PTC List

- Identify two individuals who will be responsible to maintain and manage the list:
  - Will add users
  - Will assign access level [recommend add/remove patients]
- Follow the tip sheet located on the Research Coordinator Learning Home Dashboard for further instructions.

#### Incorporating PTC into Connect Care

- Patients should not be added to any department list until they have provided written permission to be contacted.
  1. If a Connect Care patient list is used to capture this information, the permission to be contacted document must be scanned into the patient chart.
    - If retroactively adding patients who have agreed to be on the PTC → you should upload the permission to contact document into Connect Care
    - Any user who adds a patient to the list → should upload permission to contact document into Connect Care

Refer to 'Appendix A' of tip sheet to learn more about what should be included in a PTC document by clicking on the following hyperlink: [Research - Permission to Contact Lists Guidance.pdf \(albertahealthservices.ca\)](#)

#### REPORTING – Training Update

Introduction to SlicerDicer ILT is now available on MyLearningLink. [Register today!](#)

#### Reporting Training Resources

- ❖ [Connect Care Reporting Training Poster](#)
- ❖ [Communication – Reporting Training MyLearningLink](#)
- ❖ [Reporting Resources](#)

Link to latest Cogito Training update and statistics, [here](#).

Any questions, comments, or requests, please contact: [ConnectCare.ReportingSupport@ahs.ca](mailto:ConnectCare.ReportingSupport@ahs.ca)