

Navigating Health System Access Resources

Health System Access, Health Evidence & Innovation

Learning Objectives



Understanding the Administrative
Approval process



Case Scenario Walkthrough



Navigating HSA SharePoint
page

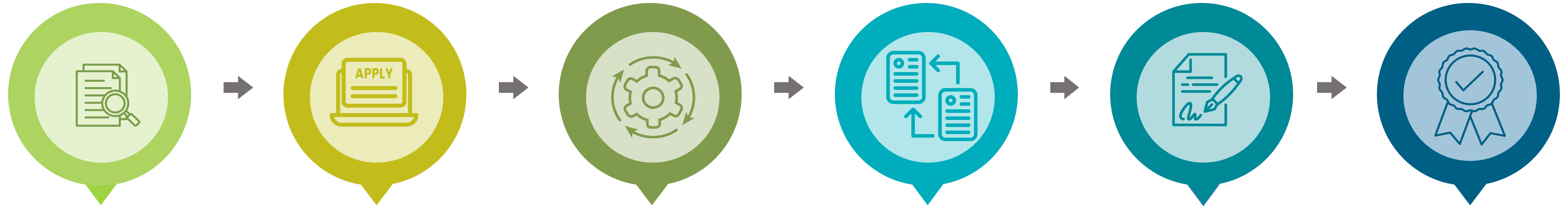
Background

The Health System Access (HSA) team works to support and facilitate research in the AHS environment.

The HSA team:

- Assists with navigation and coordination
 - Reviews and processes resource requests for AHS support
 - Provides streamlined and efficient access
-
- HSA Advisors are navigators, facilitators and connectors; we are not data providers.

Health System Access Assessment & Administrative Approval Process



RESEARCH PROPOSAL & ETHICS APPROVAL

Research teams develop the study protocol and obtain Ethics approval.

HSA APPLICATION SUBMISSION

Research teams submit the AHS module including the AHS resources request. HSA cannot assess an application until it receives ethics approval.

OPERATIONAL APPROVAL

HSA evaluates the resource impact assessment in AHS operational areas (Ex. Recruitment of participants in an AHS facility by AHS staff)

DATA SYSTEMS APPROVAL

HSA evaluates data access requests either for direct access or data extracts from various sources (Ex. Connect Care).

CONTRACTS & OTHER APPROVAL

HSA assesses contracts with collaborators, including Data Disclosure Agreements, Clinical Trial Agreements, and Budget and Finance Agreements.

ADMINISTRATIVE APPROVAL

An Administrative Approval document for research involving AHS will be provided by NACTRC and/or HSA.

STUDY INITIATION



Case Study: HEART Trial



Objective:

- Assess the impact of a cardiovascular rehabilitation program, created by UCalgary researchers, on post-myocardial infarction patient outcomes.

Recruitment Process:

- Identify eligible participants with a history of myocardial infarction at Foothills Medical Centre - Medical Cardiology (Unit 81).

Research Procedures involving AHS operational sites:

- Collect and analyze blood samples from study participants at FMC Unit 81 to evaluate cardiovascular health biomarkers.



Case Study: HEART Trial Research Proposal

UNIVERSITY OF CALGARY

Search UCalgary

IRISS

RESEARCH AT UCALGARY

Home REBExchange CSM Legal AHS Requests Participate in Research Research Management System

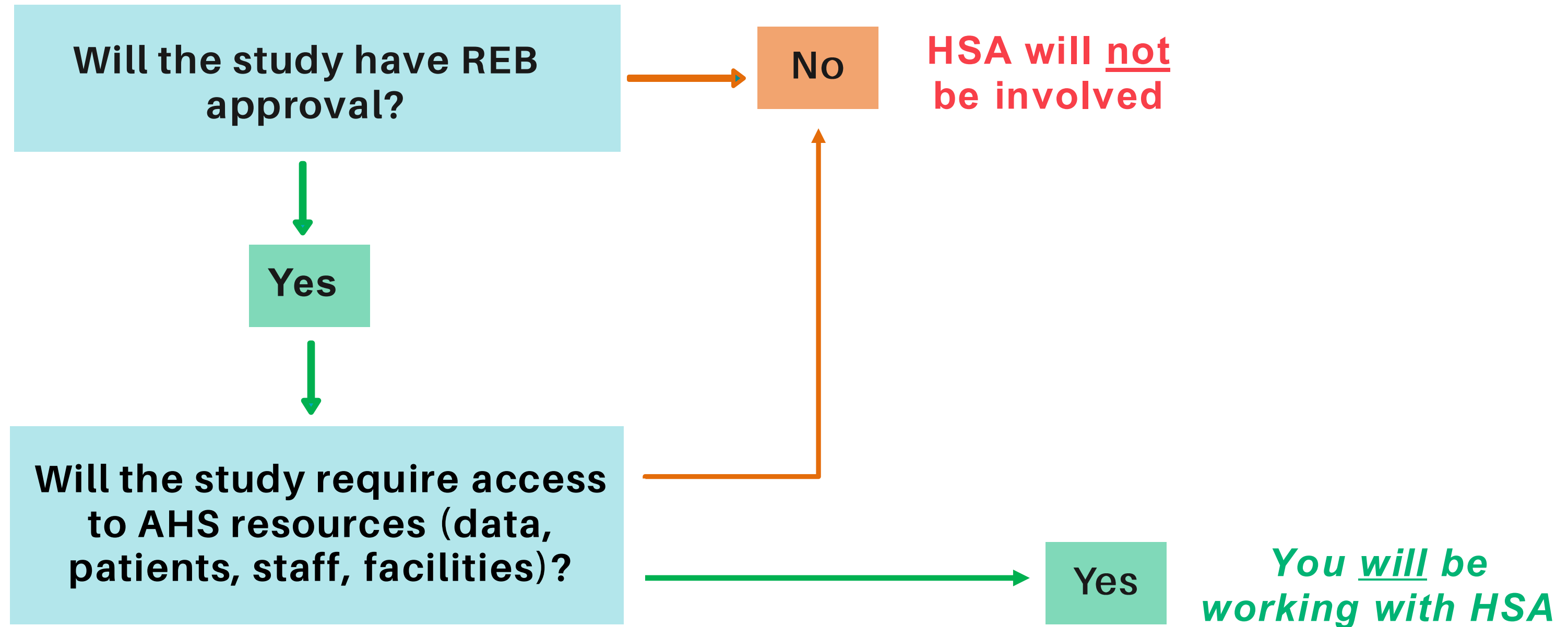
Manage human ethics and animal care protocols

>IRISS

IRISS (Institutional Research Information Services Solution) is an online system that manages all human ethics and animal care protocols.

[Health Evidence & Innovation – Submitting to a research ethics board \(REB\) \(albertahealthservices.ca\)](https://albertahealthservices.ca)

When is the AHS Health System Access (HSA) team involved ?





Case Study: HEART Trial HSA Application And Request for AHS Resources

>IRISS

Current State

Active

Submission Date: 7-Dec-2021
Initial effective: 25-May-2021
Initial expiry: 25-May-2022
Current effective: 12-Jan-2022
Current expiry: 25-May-2022

View Study

Printer Version

View Differences

View Lead Site Difference

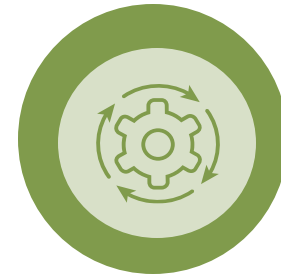
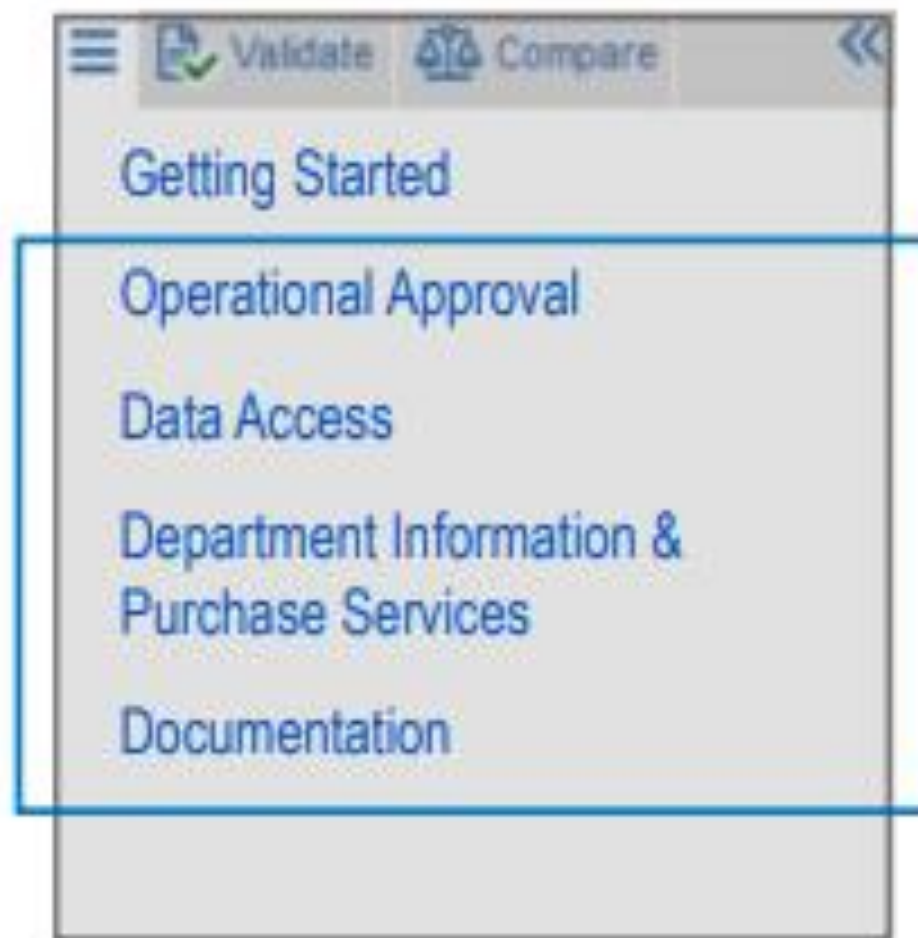
Create a Modification

Request Closure

Create a Reportable Event

AHS Resources & Facilities

[AHS Module - user guide.pdf \(ucalgary.ca\)](#)



Operational Approval:

Access to AHS operational areas and resources (Recruitment via AHS staff).



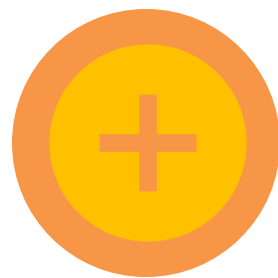
Data Access:

Access to data including, reusing, extraction, direct access to AHS data systems or paper charts (Ex. Connect Care).



Department Purchase Services:

Access to purchased services from AHS departments (Ex. Collection of Lab Samples for Research).



Documentation:

Additional documentation for AHS approvals not included in the ethics application.



Case Study: HEART Trial Operational Approval

What AHS resources are required for the study?

- Access to FMC Unit 81 and support from AHS nurses for recruitment purposes.
- An AHS phlebotomist to obtain additional 10ml research blood samples for research purposes during standard of care procedures.

Next Steps:

- Research team: Communicates with AHS operational areas to provide study plan and assess feasibility.
- HSA: Contacts AHS Managers and department leaders, providing study summaries and obtaining operational approvals.

<https://publicshare.albertahealthservices.ca/teams/HEI/SitePages/OA%20Resources.aspx>



Case Study: HEART Trial Purchase Services

What AHS resources are required for the study?

- The HEART Trial has secured funding for the collection of 40 patient blood samples.
- The FMC Unit 81 manager has approved to facilitate the trial.

Next Steps:

Exploring AHS Purchased Services

- Definition: Purchased Services departments operate on a fee-for-service basis, providing support for research endeavors.
- Process: These departments usually have clear price list for their services and require a “Purchase Service Agreement” before Initiation

https://publicshare.albertahealthservices.ca/teams/HEI/SitePages/Purchased_Services.aspx



Case Study: HEART Trial Data Systems Access

What AHS data systems are required for the study?

- [HSA Data Catalog](#)



What Connect Care access will the study need?

- [Connect Care “TIP”: IT Access for Research - CC Research Access Tips \(albertahealthservices.ca\)](#)

What Role will I be assigned once Connect Care is approved for the study?

- [IT Access for Research - CC Role Selector Tool \(albertahealthservices.ca\)](#)

Congratulations!

Once all your homework is done and the HSA application is submitted, the study will be reviewed by an HSA advisor for Administrative Approval





Case Study: HEART Trial Data Systems Access

Scenario 1:

A Research Nurse has been onboarded to the HEART trial team. They are a current AHS Employee and have been provisioned Connect Care Write-Access for a previous study.

What are the next steps to add the research coordinator to the study?

- The research coordinator **must** be added to the ethics application.
- Use the [HSA IT - Connect Care Change Request Form](#) to add and update users associated with the study.
- This form is **only** for non-oncore studies and studies with Write-Access to Connect Care.

**To update or add research team members for other data systems,
or for Connect Care View-Only access
please email HSA Research IT.**



Case Study: HEART Trial Data Systems Access

Scenario 2:

A Research Coordinator has been hired for the study and needs Connect Care access to screen eligible participants on the FMC unit. They are a **Non-AHS Employee** and have **never used Connect Care before**.

What are the next steps to add the research coordinator to the study?

- The research coordinator **must** be added to the Ethics Application.
- Use the [HSA IT Access Request for Research Form](#) to request access for an AHS network account and direct access to AHS electronic health record systems.

After the IT Access Request Submission:

- Upon submitting your IT access request, the HSA team will send an email with Connect Care training details and requirements
- Depending on the role, some individuals may be required to complete in-person training.



Case Study: HEART Trial Custom Connect Care Build

Scenario 3:

The PI and their study team would like to make the ordering workflow easier in Connect Care when they place multiple orders for their study participants.

What steps can the study team take to explore customized functionality for the study?

- The research team should explore and eliminate all self-serve options in Connect Care. This is an important first step because the study team will always be guided back to the self-serve options as a starting point:
 - ✓ Try using the preference list composer to create an order preference list if a few specific orders are cherry picked from a larger list of favorites
 - ✓ Try creating an order panel if a group of orders are always placed at the same time
- If the specific needs of the study require customized functionality, the team can submit a research build request using the [Research Build Request Form](#)
 - Note that this is a fee for service request and the study will be billed accordingly

After the Research Build Request Submission:

- The study team can expect to be contacted by an HSA advisor about their request to schedule a consultation meeting.

HSA – Contact Information

- For any questions related to studies, approval processing, or data systems please email Research.Administration@ahs.ca
- For questions related to users, CC training, access provisioning or user renewals HSAResearchITAccess@ahs.ca
- Bookmark the HSA Research Resource
Page: https://publicshare.albertahealthservices.ca/teams/HEI/HSA_Pages/Home.aspx

Connect Care Support

- For general Connect Care research questions please email connectcare.supportteam.researchquestions@ahs.ca
- Connect Care Non-Urgent Requests and Inquiries - [Ticket Submission](#)

Questions?