

RECOGNIZING INDIGENOUS VOICES IN EARLY REHABILITATION (RIVER)

We are a team of persons with lived experience, researchers, and clinicians. We are hoping to learn about available services for young children who have cerebral palsy. We are most curious about occupational therapy, which often focuses on hand use. Right now, our team is trying to learn more about occupational therapy for young children with cerebral palsy across Canada.

We want to make sure that our approach serves Indigenous families and communities, who we know have unique perceptions, priorities, and questions. We are reaching out to directly connect with Indigenous families and communities to learn what Indigenous families need, and to learn if we can work together to answer your questions in this research project.

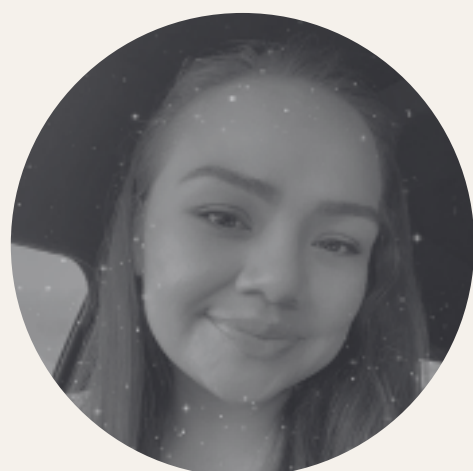
Do you or does your community have research needs for occupational therapy for young children with cerebral palsy? If so, we hope to start a conversation. Your guidance and advice will direct any research efforts. All research steps will be community-engaged, community-driven, and based on your priorities, interests, and ideas.

Thank you.



Tiffany Morin's traditional name is kihew maskihkiy iskwew and she is a member of the Metis Nation of Alberta, a recreation therapist, and an instructor at the University of Lethbridge. She is interested in Indigenous health research and supporting inclusive recreation.

Connect with Tiffany at RIVER@ucalgary.ca



Scarlett Cardinal's traditional name is wâpîmîkwâniw iskwew and she is a member of maskêkosihk (Enoch Cree Nation) located west of Edmonton. With a background in Child and Youth Care and Human Ecology, Scarlett is interested in Indigenous governance, policy and well-being.



Dion Kelly is an Indigenous researcher at the University of Calgary working on how children with severe cerebral palsy can use technologies controlled by brain signals to better communicate and take part in daily life activities.



Adam Kirton is a settler and pediatric neurologist. His clinical practice and research focus on trying to understand how the brain develops after an injury early in life in order to afford new opportunities for children with disabilities to participate in life.



Alicia Hilderley is a settler and researcher at the University of Calgary. She is interested in creating equitable opportunities for children to engage in physical activities.



Darcy Fehlings is a settler, Developmental Paediatrician and researcher at Holland Bloorview Kids Rehabilitation Hospital, University of Toronto. Her clinical and research work focuses on interventions for children with cerebral palsy and promoting equitable access of these interventions to children with CP across Canada.



John Andersen is a settler and Developmental Paediatrician at the Glenrose Rehabilitation Hospital and the University of Alberta. His clinical and research work focuses on the effects of brain injury early in life and interventions supporting wellbeing and participation of children with disabilities.

View this letter on our website:

