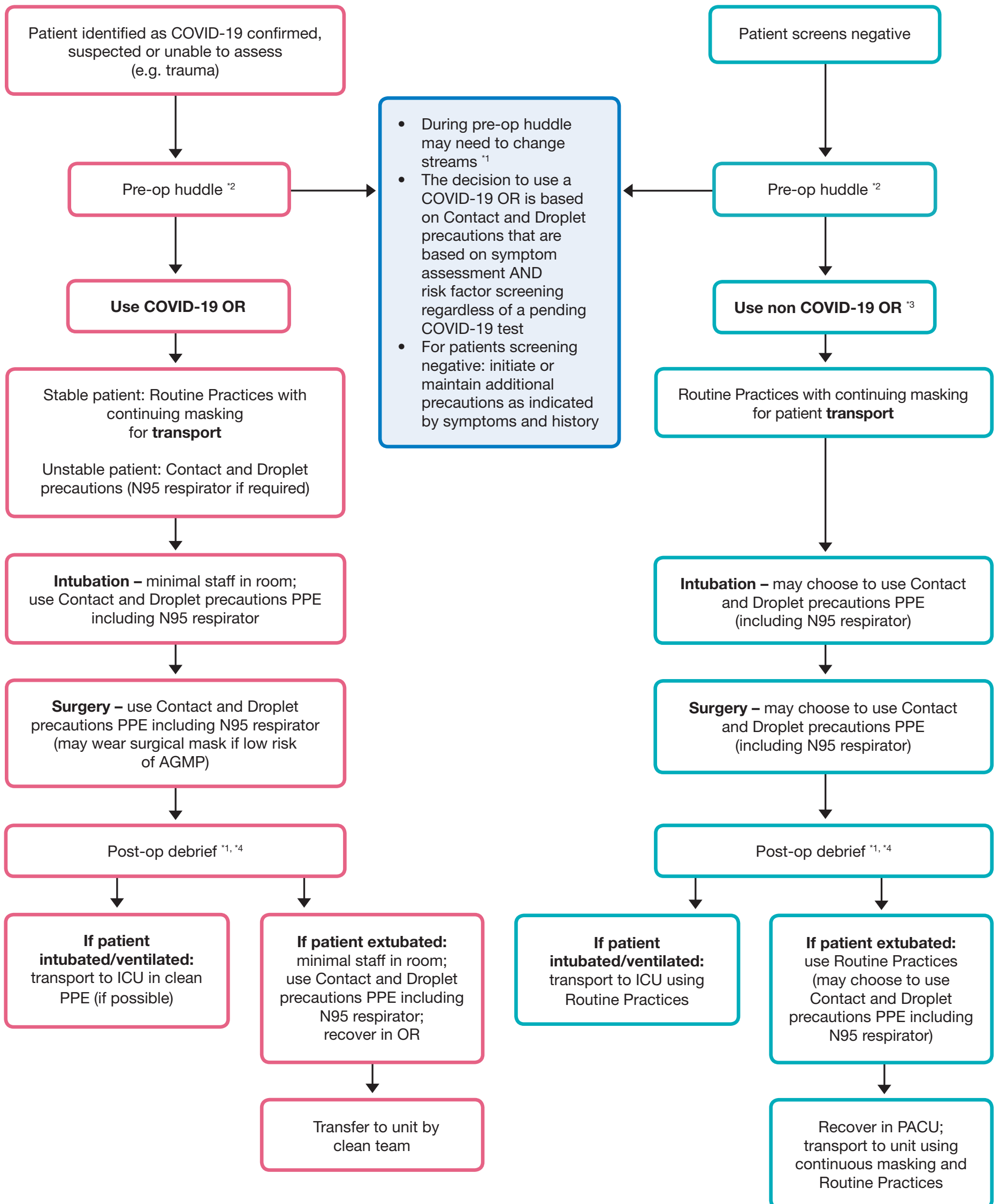


# COVID-19

## Point-of-Care Risk Assessment for Surgery



### \*COVID-19 OR Algorithm Notes

1. Communication to PACU occurs in pre-operative huddle; changes must be communicated clearly during the post-operative debriefing.
2. Pre-operative huddle: Confirm whether patient is in COVID-19 confirmed, suspected, or unable to assess stream, or non COVID-19 stream. Discuss disposition of the patient including intra-operative and postoperative PPE requirements.
3. The decision to use Contact and Droplet precautions PPE including use of an N95 respirator/face shield in a non COVID-19 OR is based on clinical judgement.
4. Post-operative debriefing: communicate to PACU if any change to care plan or post-operative recovery location. If no changes, follow Routine Practices and proceed with standard patient care.