

Better Health. Powered by Information.

---

# CMIO

## Connect Care Update

Dr. Tom Rich, ACMIO AHS Calgary Zone, Emergency Physician  
Linda Kuijten, Clinical Informatics Lead CMIO Calgary Zone

September 24, 2018



# Outline

- Connect Care overview
- Timeline & project status
- Clinical System Design
- Data conversion (SCM data interface)
- Physician training
- Next steps & Questions

## Connect Care Update

---

### **Vision:**

Better Health, Powered By Information

### **Mission:**

To deliver best care and improve health outcomes for and with Albertans through an accessible, integrated, comprehensive and standardized clinical information system.



# Epic User Group Meeting (UGM)

- Annual meeting at Epic
- Connecting, networking and learning
- “ We are on the right track”

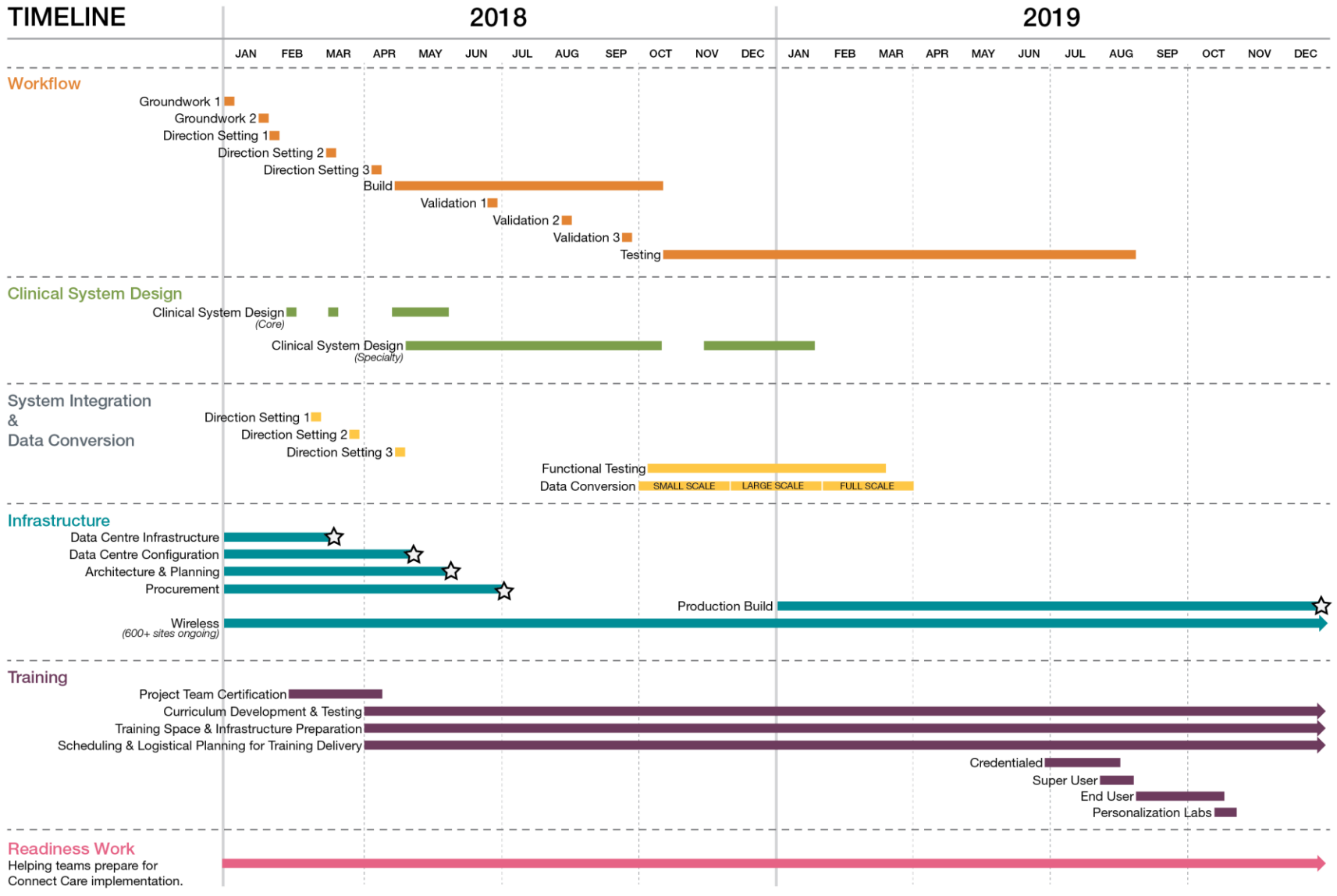


# Connect Care Timelines



	Sat, November 2 <sup>nd</sup> , 2019	Sat, March 7 <sup>th</sup> , 2020	Sat, May 2 <sup>nd</sup> , 2020	Sat, September 12 <sup>th</sup> , 2020	Sat, March 6 <sup>th</sup> , 2021	Sat, September 11 <sup>th</sup> , 2021	Sat, March 5 <sup>th</sup> , 2022	Summer 2022	Fall 2022	
	Wave 1	Wave 2	Wave 3	Wave 4	Wave 5	Wave 6	Wave 7	Wave 8	Wave 9	
Edmonton Stream	WMC Includes Ambulatory		Sturgeon   Suburban Edm	RAH/ Glenrose	ECHR	Grey Nuns   Misericordia AHE	LTC, Public Health Prep	LTC North   Public Health	LTC South   Public Health	
Rural Stream		DTHR Includes Centennial Center   GPRH		PCHR   NLHR High Level Ft. Vermilion La Crete	Palliser   Chinook	Aspen   NLHR: Ft. McMurray				
Calgary Stream		Suburban Cgy & Urgent Cares		ACH   PLC	FMC	SHC   RGH				
Cancer Stream				Cancer North	Cancer South					
Ancillary Specialty Stream	DI   Lab: Dynalife Lab: Edm   Pharmacy	DI   Lab: Rural Pharmacy	DI   Lab: Rural Pharmacy   Lab: Edm	DI   Lab: Rural Pharmacy	DI   Lab: Rural Pharmacy	Lab: Rural   Lab: Calgary Pharmacy   Corrections		Capital Care   Other Services	Care West	
Corporate Stream						TBD				
		Waves 4,5,6					Waves 7,8,9			

# CONNECT CARE: Timelines



☆ Key Milestone Reached



# Clinical System Design

Customization

Order Sets

Flowsheets

Metrics  
Reports  
Dashboards

# Data Conversion

Data Types	Source System
Allergies	AltraBase, ARIA MO, BDM Edmonton, eClinician, MEDITECH, NIS, OTTR, PARIS(Continuing Care), PointClickCare, SCM, Tandem
Encounter	ARIA MO, ARMHIS, ASIST, AXON, Clinibase, eClinician, MEDITECH, PCIS, PointClickCare, Tandem, VAX
Genetics	COPATH, Millenium, SHIRE, Specimen Gate, Sunquest
Imaging Results	AGFA RIS, MEDITECH RIS, Millennium RIS
Lab	Cerner Millenium (AP, Gen, Micro), COPATH, Meditech (AP, Gen Lab, Micro), SunQuest (Gen Lab, Micro)
Medications	AltraBase, ARIA MO, eClinician, NIS (Renal), OTTR, PARIS ( Continuing care), PARIS SARP( Renal)
Notes	ARIA MO, ASIST, eClinician, OTTR, PARIS ( Continuing care) PointClickCare, SCM, TREP – CCITR, TREP - eScripton



## SCM Data Interface

- Web Based SCM Reference
- Access to historic SCM data from within Connect Care
- AHS development
- Hosted on AHS server

SCM Web Reference

ULI: 34224234234      Millmck SCMDEV CD, CDThree      ACH-1-1HB-02  
 RHRN: 2160067399      18yr ( 2010-May-01 )      Gender: Female

Patient Info | Documents | Orders | Results | SCM Reports

**Summary View**

- Alerts
- Allergies/Intolerances
- Comments
- Care Providers
- Health Issues

Demographics  
 SCM Visit History

**Alerts**

Type	Alert	Status	Priority	Date/Time
WARNING	Clinical Record FS Alert	Acknowledged	HIGH	2017-Dec-22

**Allergies/Intolerances**

Type	Allergen/Product	Reaction	Confidence Level	Onset Date	Info Source	Status	Reason	Date Reviewed	Entered Date
<b>Allergy (1)</b>									
Contact	Insect Bites	Fever, Facia...	Confirmed		Nurse	Active			2014-Jun-03
<b>Intolerance (1)</b>									
Food	Artificial Colors	Nasuea/Vo...	Suspected	2014-Jun-03	Family	Active			2014-Jun-03
Food	Broccoli	Nasuea/Vo...	Suspected	2014-Jun-03	Self	Active			2014-Jun-03

**Comments**

Type	Comment	Scope
Ed Registration	Informational Messages and Comments	Visit

**Care Providers**

Role	Provider	Phone	Status	Effective Date	End Date	Entered Date	Org Unit
Attending Group	Unknown, FCARD (Other)		Active	2012-Oct-02		2012-Oct-02	
Admitting	Abelseth, Gregory Allan (M...	403-258-1788	Active	2017-Nov-02		2017-Nov-02	Medical Staff

**Health Issues**

Health Issues	Code	Type	Onset Date	Relationship	Status	Entered Date	Entered By	Scope	Closed Reason
<b>Family history (1)</b>									
Family History of Leukemia	Z80.6	Family History			Active	2016-Nov-06	Physician, Five	General	
<b>Primary Dx (1)</b>									
Injury of deep palmar arch	S85.3	Primary Dx	2016-Jan-2		Active	2016-Jan-2	Physician, One	Visit	

Version 2018-01-01 | AHS SCM Custom Applications Team

# Physician training

## **BASIC TRAINING**

(6-12 weeks before Go-Live)

## **PERSONALIZATION**

(1-4 weeks before Go-Live)

## **OPTIMIZATION**

(4-6 weeks post Go-Live)

**e-Learning**

**In-class Instruction**

**After Class Training Materials and Exercises**

# Next steps

- Finalize Clinical System Design
- Verify Data Conversion
- Define implementation strategies for Calgary Zone
- Site visits for infrastructure needs
- Physician trainers and education leads to develop training curriculum

# Questions

## Resources

- *Physician Handbook* <http://handbook.ahs-cis.ca>
- *Updates* <http://bytesblog.ca>
- *Contact* [cmio.caz@ahs.ca](mailto:cmio.caz@ahs.ca)