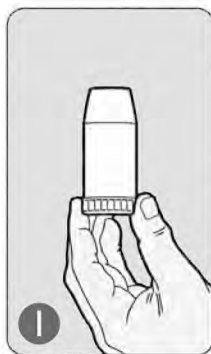


DRY POWDER INHALER

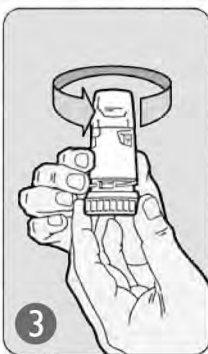
TURBUHALER (6+ YEARS)



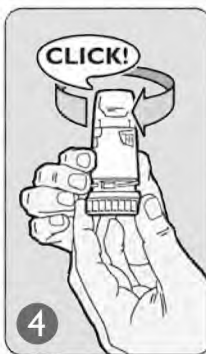
1
CLOSED



2
TWIST OPEN



3
TURN



4
TURN BACK



5

BREATHE OUT



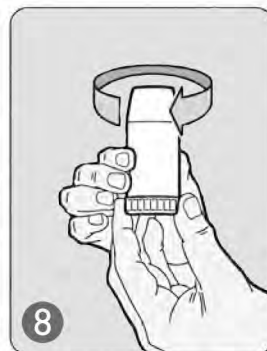
6

DEEP BREATH IN & HOLD



7

RINSE & SPIT



8

TWIST TO CLOSE

IMPORTANT INFORMATION

Note: Place mouthpiece between your teeth and close your lips **(like sucking a straw)**.

Empty?: The window on the device starts to show red when there are 20 doses left.
When the window is completely red, it is empty.
The window on some devices also shows a "0" when it is empty.

Expired?: Remove the cap to check the expiry date on the device.

Reminders: Keep the Turbuhaler dry.
Do not breathe into the device.
Replace the cap after use.

Cleaning: Wipe mouthpiece with a dry tissue or cloth.
Ask your pharmacy how to safely throw away medicines and asthma devices

This material is designed for information purposes only. It should not be used in place of medical advice, instruction and/or treatment. If you have specific questions, please consult your doctor or appropriate healthcare professional.

Developed by the Community Pediatric Asthma Service, Calgary and area.

**For more information on asthma medications and device demos, visit our website at:
www.ucalgary.ca/icancontrolasthma**

