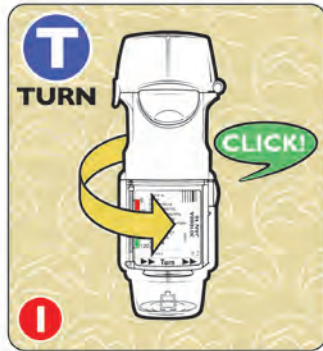
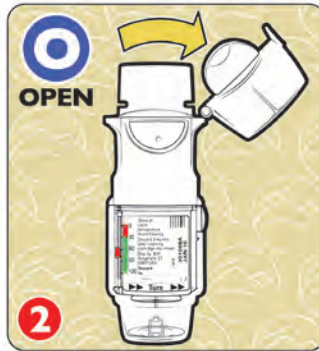


SOFT MIST INHALER

RESPIMAT - DAILY USE



1 KEEP CAP CLOSED
TURN BASE



2 FLIP OPEN CAP



3 BREATHE OUT



4 START SLOW BREATH,
PRESS BUTTON,
KEEP BREATHING IN



5 CLOSE CAP

6 If another puff
is prescribed,
**Repeat
#1-5**

REMINDER

IMPORTANT INFORMATION

Note: Place mouthpiece between your teeth and close your lips.

Empty?: The base has a dose tracker – “0” means it is empty. Base will lock. Throw it away.

Expired?: Check the expiry date on the device.

Reminders: If RespiMAT isn't used for 1 week, **PRIME 1 TIME** (See Reverse Side).
If RespiMAT isn't used for 3 weeks, **PRIME 3 TIMES** (See Reverse Side).
Do not get mist in eyes.

Cleaning: Wipe mouthpiece with a dry tissue or cloth.

This material is designed for information purposes only. It should not be used in place of medical advice, instruction and/or treatment. If you have specific questions, please consult your doctor or appropriate healthcare professional.

Illustrations developed by the Community Pediatric Asthma Service, www.ucalgary.ca/icancontrolasthma

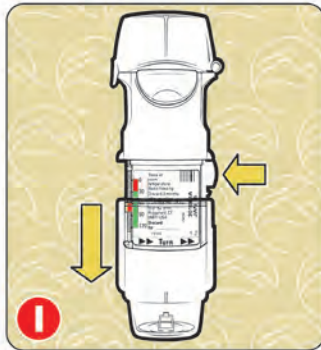
For more information on inhaled medications and device demos, visit our website at:
www.ucalgary.ca/asthma



SOFT MIST INHALER

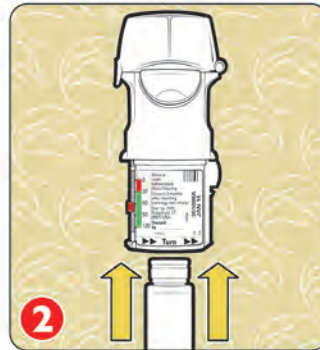
RESPIMAT - LOADING AND PRIMING

LOADING: REQUIRED ONCE, PRIOR TO FIRST USE



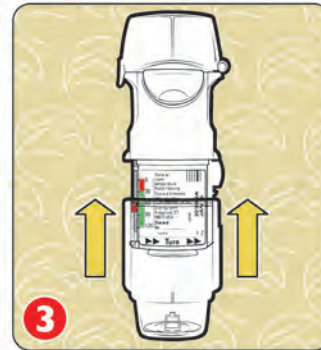
1

PRESS SAFETY CATCH AND PULL OFF CLEAR BASE.



2

INSERT NARROW END OF CARTRIDGE UNTIL IT CLICKS. FIRMLY PRESS AGAINST A HARD SURFACE TO ENSURE IT IS SECURELY IN PLACE.



3

REPLACE CLEAR BASE.

PRIMING CARTRIDGE: REQUIRED ON FIRST USE, FOLLOW T.O.P.



T
TURN

4

TURN BASE UNTIL YOU HEAR "CLICK"



O
OPEN

5

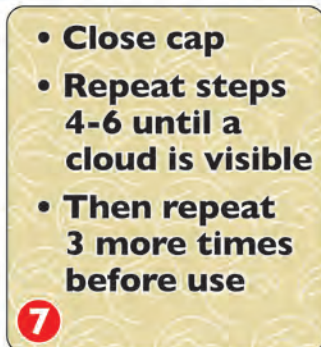
FLIP OPEN CAP



P
PRESS

6

POINT DOWNWARD AND PRESS BUTTON



7

REMINDER

- Close cap
- Repeat steps 4-6 until a cloud is visible
- Then repeat 3 more times before use

Note:

If Respimat isn't used for 1 week, **PRIME 1 TIME** (Steps 4-6).

If Respimat isn't used for 3 weeks, **PRIME 3 TIMES** (Steps 4-7).

Always keep cap closed when turning to avoid accidental activation of device.

Do not get mist in your eyes.

