

Sonosite PX

Advanced Image Clarity and Confidence



Any patient. Anywhere. Anytime.

See More. Do More.

Sonosite PX

Advanced Image Clarity **and Confidence**

Inspired, informed, and improved by thousands of hours working side-by-side with clinicians on the front lines of medicine, Sonosite PX point-of-care ultrasound system incorporates the most advanced image clarity Fujifilm Sonosite has ever offered, to give clinicians an advanced level of confidence for diagnostic and procedural applications.

This isn't just our most advanced point-of-care ultrasound solution ever, it's YOURS.



TECHNOLOGY DRIVEN
5-YEAR STANDARD WARRANTY

Designed for the Human Touch

The human touch is crucial when it comes to point-of-care ultrasound. That's why Sonosite PX has been designed around every detail for the way clinicians work and deliver care.

Touch and Physical Controls

Intuitive touch panel and physical buttons for quick access to the most-used controls. Unique raised buttons allow clinicians to make adjustments via feel. Sonosite PX can be operated with gloves and a sterile drape.

Workflow Efficiency Features

The streamlined user interface improves workflow, allowing clinicians to find controls quickly with fewer touches. Exam types are optimized with most-needed annotations and calculations.



Get Closer at the Point of Care

We listened and listened some more, working with clinicians across the globe. Sonosite PX was created and inspired by the way they need to deliver care, wherever they deliver it.

Adaptable Positioning

Adaptable horizontal to vertical work surface allows clinicians to adjust Sonosite PX for optimal bedside ergonomics and bring it closer to the bedside.

Closer Access

The low-profile wheelbase fits under most beds for closer access, especially important while operating the system across the bed. Front and side levers simplify height adjustments.

Adjustable Height
System height can be raised or lowered for a wide range of users.

Adaptable Positioning
Work surface adapts from horizontal to vertical with a push or pull of the handle.



Environment Inspired

Optimized for the way you move. The way you think.

The agile, small footprint Sonosite PX stand offers maneuverability and dedicated features to keep your system organized and stocked with the essentials.

Data Management and Connectivity

Wifi, Ethernet port, 1080p digital video output compatible with 1080p displays, (4) USB 2.0 ports, (2) USB 3.0 ports, (1) dedicated USB port for optional printer.[†]

Durable Transducer Holders

Integrated holders (no more cups) for simplified clean up and ease of use.

Triple Transducer Connect

Three transducer ports so your most-used transducers are at the ready with the touch of a button.

Versatile Storage Solutions

The flexible storage system adapts to left or right side needs—gel holder, wipes holder, storage bin, and lockable drawer to secure supplies.

Cord Management

Power cords are confined within the column to help prevent tangles.

Cable Management System

Cable catcher and hooks help prevent tangled transducer cables. Even at the lowest stand height, cables are less likely to drag on the floor.

Low-Profile Wheeled Base

The low-profile wheel base helps position the system close to the bedside.



Peripheral Accessories

Barcode Scanner

Save time by automatically linking patient data to the ultrasound scan. English only, where available.

Barcode Expressions

Auto-populate physician ID and patient information with customized software for your Sonosite Barcode Scanner. English only, where available.

Sonosite ECG Module

The 3-lead Sonosite ECG Module connects directly to the Sonosite PX ultrasound system through a dedicated ECG port. It allows the system to display an ECG trace on the clinical monitor. Includes ECG lead wire set.

Medical Grade Printer

Add the optional Black and White Printer to print ultrasound studies.

Needle Guide Starter Kits

Improve positioning to help guide needles to an exact target on the first attempt.

PowerPark Cordless Charging Station

Dock the system in a central location while the battery charges for cord-free use. Cord-free use eliminates power cords dragging on the floor, risking contamination. No power cords to clean and disinfect.

[†] Off the stand, Sonosite PX has (2) USB 3.0 ports.



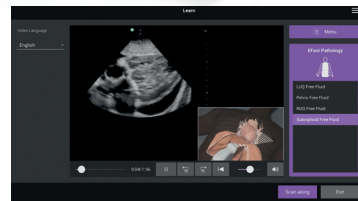
Integrate Medical Informatics

Sonosite Synchronicity™ workflow manager supports seamless credentialing, quality assurance, and billing. Compile data from all connected point-of-care ultrasound systems into a central location.



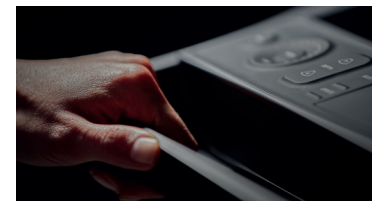
Guide Needles Precisely

Auto Steep Needle Profiling helps in-plane needle visualization from multiple angles with one system interaction. The clinician simply advances the needle at the angle optimal to reach the target.



Education at Your Fingertips

Sonosite is dedicated to clinician education. More than 150 scan-along education tutorials are onboard for COVID-19, diagnosis, procedures, pathology, and system and transducer use.



Rest Assured with Data Security

Sonosite PX includes robust security features to keep patient information safe and networks secure. The system meets FIPS199, FIPS200, and NIST 800-53.

Scan with Confidence

Sonosite designs, manufactures, and tests transducers in-house. Our transducers aren't only durable, they're also made for superior imaging in the most demanding environments.

- IPX7 rated for immersion*
- Drop-tested to 1 meter
- Sonosite-manufactured transducers are covered by a Sonosite 5-year standard warranty

Optional Needle Guide Starter Kit

- CIVCO Ininiti Plus™ In-Plane Ultrasound Needle Guide
- CIVCO AccuSITE™ Out-of-Plane Ultrasound Needle Guide
- CIVCO Disposable Endocavity Needle Guide



C5-1 ●
5-1 MHz Curved
 Scan Depth: 4.7–30 cm

Exam Types:

Abdomen, Gynecology, Lung, Nerve, Musculoskeletal, Early Obstetrics, Obstetrics, Spine



C10-3 ●
10-3 MHz Curved
 Scan Depth: 3–18 cm

Exam Types:

Abdomen, Gynecology, Lung, Nerve, Musculoskeletal, Spine



P5-1
5-1 MHz Phased
 Scan Depth: 5–35 cm

Exam Types:

Abdomen, Cardiac, Focused Cardiac, Lung, Obstetrics, Orbital, Transcranial Doppler (TCD)



T8-3
8-3 MHz Multi
 Scan Depth: 4–18 cm

Exam Types:

Cardiac, Cardiac Resuscitation



L12-3 ●
12-3 MHz Linear
 Scan Depth: 1.5–9 cm

Exam Types:

Arterial, Breast, Carotid, Lung, Musculoskeletal, Nerve, Ophthalmic, PIV, Superficial, Venous



L15-4 ●
15-4 MHz Linear
 Scan Depth: 1.5–6 cm

Exam Types:

Arterial, Breast, Carotid, Musculoskeletal, Nerve, Superficial, Venous



L19-5 ●●
19-5 MHz Linear
 Scan Depth: 1–6 cm

Exam Types:

Arterial, Lung, Musculoskeletal, Nerve, Ophthalmic, PIV, Superficial, Venous



IC10-3 ●
10-3 MHz Curved
 Scan Depth: 3–15 cm

Exam Types:

Gynecology, Early Obstetrics, Obstetrics, Prostate

* Protected against water immersion for 30 minutes at a depth of up to 1 meter.



FUJIFILM SONOSITE

Value from Innovation

FUJIFILM Sonosite, Inc.
 Worldwide Headquarters
 21919 30th Drive SE, Bothell, WA 98021-3904
 Tel: +1 (425) 951 1200 or +1 (877) 657 8050
 Fax: +1 (425) 951 6800 sonosite.com

FUJIFILM Sonosite BV
 European Headquarters
 Joop Geesinkweg 140, 1114 AB Amsterdam, Netherlands
 Tel: +31 20 462 0000

Sonosite Worldwide Offices
 FUJIFILM Sonosite Australasia Pty Ltd: Australia1300 663 516
 FUJIFILM Sonosite Australasia Pty Ltd: New Zealand . . .0800 888 204
 FUJIFILM Sonosite Canada Inc. +1 888 554 5502
 FUJIFILM Sonosite GmbH–Germany +49 69 80 88 40 30
 FUJIFILM Sonosite Iberica SL–Spain +34 91 123 84 51
 FUJIFILM Sonosite India Pvt Ltd +91 124 288 1100

FUJIFILM Sonosite Ltd–United Kingdom +44 1462 341 151
 FUJIFILM Sonosite SARL–France. +33 182 880 702
 FUJIFILM Asia Pacific Pte. Ltd. +65 6383 9933
 FUJIFILM (China) Investment Co., Ltd. +86 21 5010 6000
 FUJIFILM Medical Co., Ltd.–Japan +81 3 0418 7190
 FUJIFILM Middle East (FZE) +971 4 887 8722

Any patient. Anywhere. Anytime.