

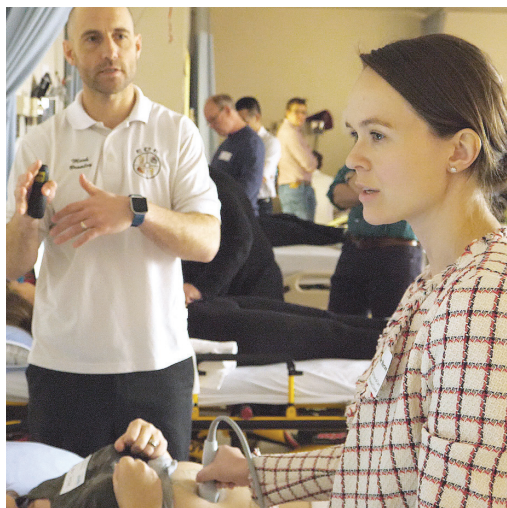


RhPAP supports rural professional development in your community

Since 1991, the Rural Health Professions Action Plan (RhPAP) has provided continuous professional development opportunities to enhance the quality of health care in rural Alberta.

- RhPAP's strategic goal "to expand and formalize RhPAP's programs to other key rural health professionals":
 - Enables providers to better deliver high-quality health care closer to home
 - Supports the attraction and retention of a skilled health workforce to rural Alberta
- RhPAP's Programs and Courses:
 - Help reduce professional isolation
 - Offer practical hands-on training or easily accessible online learning
 - Provide you with the skills you need to better serve your community
 - Are designed to be flexible to meet your needs and those of your health-care team

We look forward to supporting you as you help keep health care close to home! Visit rhpap.ca/HealthProfessions



RhPAP supports
Rural Health Professionals

Rural Education and Advanced
Learning (REAL) Program
rhpap.ca/REAL

Team-Based Learning (TBL)
Initiatives
Email TEAMS@rhpap.ca

Find out more at rhpap.ca/HealthProfessions

@AlbertaRhPAP    

Rural Education & Advanced Learning (REAL) Program

The **REAL Program** is aimed at nurses, midwives, Nurse Practitioners, and allied health professionals working in rural Alberta in a PCN, out-of-scope, non-union position or independent/private practice.

The **REAL** Program has been designed to be flexible. RhPAP recognizes that the health needs of rural communities vary between communities and that training opportunities need to be able to address these variances and the unique demands of rural practice.

REAL Program funding may cover course/ training/ program fees, accommodations, mileage/travel expenses and course books/material costs.

For more information, visit rhpap.ca/REAL

Team-Based Learning (TBL) Initiatives

Comprehensive Approach to Rural Emergencies (CARE) Course

The **CARE** Course is a travelling rural program for hospital and pre-hospital teams. This two-day program provides hands-on learning in a fun, warm, and supportive environment. Medical, trauma, obstetric, and pediatric emergency management are featured.

Simulations are appropriate to the realities of rural practice with a focus on supporting the teamwork and skills enhancement needed to provide rural emergency care.

For more information, visit rhpap.ca/CARE

Heart and Stroke ACLS/PALS Course Support

RhPAP may be able to provide financial and/or instructor support for **ACLS** or **PALS** courses delivered in your rural community.

For more information, email TEAMS@rhpap.ca

Emergency Department Echo (EDE) Ultrasound Course

EDE is the most highly rated, introductory ultrasound course in North America and has been taught to more than 15,000 health professionals. The complete course involves online modules taken in advance of two weekend hands-on ultrasound workshops, or one four-day boot camp, taught in your community.

During the first two days, participants are taught ultrasound techniques and, then, provided an opportunity to practise what they have learned. The final two days of practice allow participants to complete the 50 scans and testing required to become independent practitioners through the Canadian Point of Care Ultrasound Society (CPoCUS).

For more information, visit rhpap.ca/EDE

General Emergency Medicine Skills (GEMS) Course

RhPAP, in partnership with Shock Trauma Air Rescue Society (STARS), offers rural physicians, nurses, nurse practitioners, and physician assistants the opportunity to receive relevant, interactive skills training at their rural location through the GEMS course.

GEMS is an online, multimedia emergency-skills training experience with a hands-on component provided via a STARS Human Patient Simulation Session that enables rural health professionals to upgrade their emergency medical skills at work or at home.

For more information, visit rhpap.ca/GEMS

Financial Incentive for Rural Staff Training (FIRST) Program

The **FIRST** Program was developed to enable rural health professionals to have access to innovative and collaborative education opportunities that are not already funded elsewhere.

Through this program, rural, multidisciplinary teams can bring team leadership, communication, continuing professional development (CPD) and medical education (CME), or practice management training sessions to their own communities.

For more information, visit rhpap.ca/CPD