

SonoSite X-Porte

ONE LOOK AND
THE DIFFERENCE
IS CLEAR.





X-Porte represents an entirely new approach to clinical ultrasound. Its imaging, features and educational resources are fluidly brought together in a convenient, all-in-one kiosk design.

At the sweep of your hand, it responds so quickly and intelligently to your imaging needs, you'll know it was created precisely for professionals like you. Its self-explanatory control panel makes system navigation a breeze, and its sealed touch screen has no buttons for pathogens to hide behind.

X-Porte's slender profile makes it easy to maneuver alongside beds and exam tables for point-of-care visualization and procedures. For portability and durability during transport, its screen folds down and its stand lowers making X-Porte even more compact for navigating busy corridors. The X-Porte ultrasound core can be detached easily from the kiosk to provide another configuration option. For servicing, nothing could be more convenient than X-Porte's five-year warranty and removable engine.



SCAN

Using default transducer and exam type.

Breakthrough extreme definition imaging

X-Porte imaging technology was created to meet the challenge of side-lobe artifacts, so now you can scan with image clarity, resolution, and color sensitivity never before seen in point-of-care ultrasound systems.



LEARN

How to perform an exam, improve a procedure, or perfect your technique.

Real-Time Scan Along Learning

For instant reference, scan along with an onboard library of visual guides featuring step-by-step learning tutorials. Use X-Porte's Visual Guides for comparing 3D beam-direction animations to corresponding 2D ultrasound images.



ENTER

Patient information.

Gesture-Driven Interface

Optimized workflow is always at your fingertips. Easily customize the interface to suit your needs. Don't like the order of menu items? Change them. Too many controls? Minimize them.

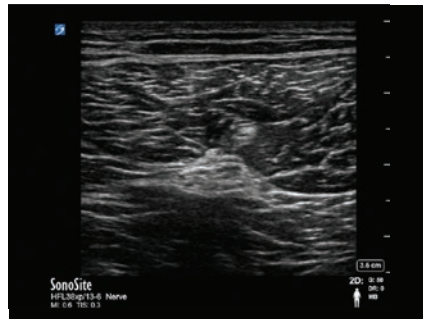


THE WORLD'S FIRST ULTRASOUND KIOSK.

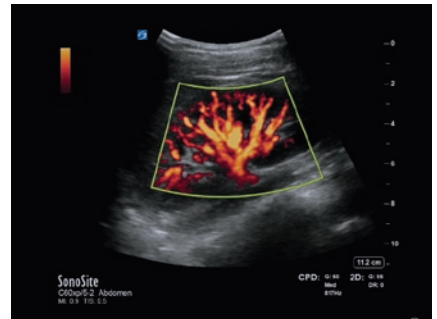
One look and the difference is clear—extreme definition imaging technology drives X-Porte's image clarity and resolution by significantly reducing visual clutter.



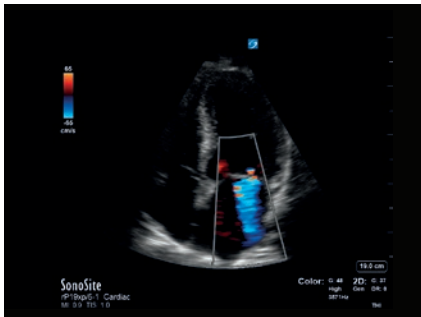
Gallbladder



Sciatic Nerve



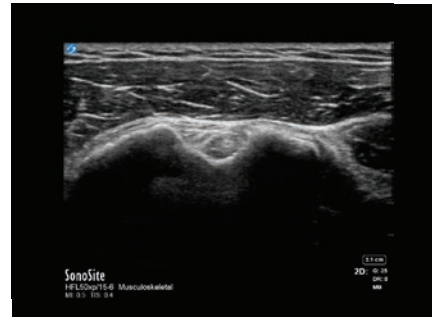
Kidney Blood Flow



Apical Mitral Flow



Fetal Profile



Biceps Tendon

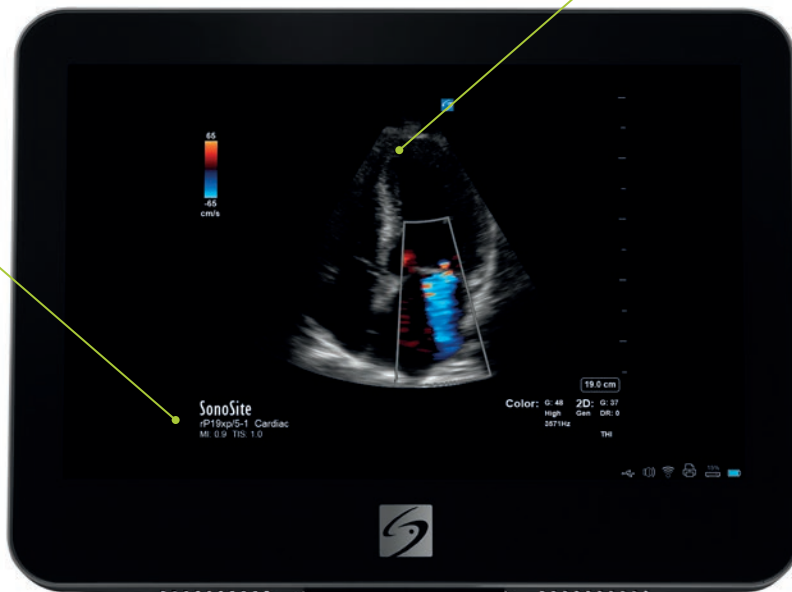


SonoSite X-Porte

SONOSITE X-PORTE MAIN FEATURES AT A GLANCE.

Designed for easy cleaning,
the sealed touchscreen
has no buttons or levers for
pathogens to hide behind

Extreme definition imaging
substantially reduces visual clutter
while significantly enhancing clarity



Customizable to suit your needs, workflow
optimization is at your fingertips with the
intuitive gesture-driven interface

During live scanning, simultaneously
access the onboard library of education
videos for real-time learning



SONOSITE X-PORTE TRANSDUCERS



C11xp

8-5 MHz Curved

Exam Types:

Abdominal, Arterial, Neonatal, Nerve, Venous

Scan depth: 15 cm



C35xp

8-3 MHz Curved

Exam Types:

Abdominal, MSK, Nerve

Scan depth: 16 cm



C60xp

5-2 MHz Curved

Exam Types:

Abdominal, Gynecology, MSK, Nerve, Obstetrics

Scan depth: 30 cm



ICTxp

9-5 MHz Curved

Exam Types:

Gynecology, Obstetrics

Scan depth: 15 cm



HFL38xp

13-6 MHz Linear

Exam Types:

Arterial, Breast, Lung, MSK, Nerve, Small Parts, Venous

Scan depth: 6 cm



HFL50xp

15-6 MHz Linear

Exam Types:

Breast, MSK, Nerve, Small Parts

Scan depth: 6 cm



HSL25xp

13-6 MHz Linear

Exam Types:

Arterial, Lung, MSK, Nerve, Ophthalmic, Superficial, Venous

Scan depth: 6 cm



L25xp

13-6 MHz Linear

Exam Types:

Arterial, Lung, MSK, Nerve, Ophthalmic, Superficial, Venous

Scan depth: 6 cm



L38xp

10-5 MHz Linear

Exam Types:

Arterial, Lung, Nerve, Small Parts, Venous

Scan depth: 9 cm



P10xp

8-4 MHz Phased

Exam Types:

Abdominal, Cardiac, Neonatal

Scan depth: 15 cm



rP19xp

5-1 MHz Phased

Exam Types:

Abdomen, Cardiac, Lung, Obstetrics, Orbital, Transcranial

Scan depth: 35 cm



TEExp

8-3 MHz Phased

Exam Types:

Cardiac

Scan depth: 18 cm



D2xp

2MHz Pencil

Exam Types:

Cardiac

Scan depth: N/A



Needle guides and kits available with the following transducers:

C35xp, C60xp, HFL38xp, HFL50xp, ICTxp, L25xp, L38xp, P10xp and rP19xp.

A transverse needle guide is available with the L25xp.

Designed from the ground up for your work style and work environment, X-Porte offers you an entirely new ultrasound experience by providing these revolutionary tools in a unique, integrated system exclusive to SonoSite.

SYSTEM SPECIFICATIONS

Stand Dimensions: 26.4" L x 21.2" W
Stand Height (max): 65" (monitor up)
Stand Height (min): 42.2" (monitor down)
Height Adjustment: 9" travel
HD Monitor: 19" diagonally (minimum)
Control Panel: 12.1" capacitive touchscreen
System Controls: Multi-touch gestures
Tilt Adjustment: 0 to 110 degrees
Clinical Monitor Viewing: 85 degrees left and right, 85 degrees up, 85 degrees down
Architecture: All digital broadband
Dynamic Range: Up to 183 dB
Gray Scale: 256 shades
HIPAA Compliance: Comprehensive toolset

IMAGE MODES

2D Broadband Imaging
Tissue Harmonic Imaging
Pulse Inversion Harmonic Imaging
M-Mode
Velocity Color Doppler
Color Power Doppler
Pulsed Wave Doppler (update and simultaneous)
Pulsed Wave Tissue Doppler
Continuous Wave Doppler, ECG

IMAGE PROCESSING

Extreme definition imaging technology
SonoAdapt Tissue Optimization
SonoHD2 Imaging Technology
SonoMB Multibeam Technology
Dual Imaging
Dual Color Imaging
AutoGain and AutoGain Brightness Adjust
Restore Default Gains
Dynamic Range
Duplex Imaging
8x Zoom Capability
Cine Processing: Dynamic Range, Zoom
2D Image Optimization: Res, Gen, Pen
Overall Gain, Near and Far Field Gain Control

Color and Doppler Flow Optimization (low, medium, high)
Color Variance Mode
2D Reduced Imaging Sector (steerable)

STEEP NEEDLE PROFILING

(Available on these transducers and exams)

C35xp: MSK, Nerve

C60xp: MSK, Nerve

HFL38xp: Arterial, Breast, MSK, Nerve, Small Parts, Venous

HFL50xp: Breast, MSK, Nerve, Small Parts

HSL25xp: Arterial, MSK, Nerve, Venous

L25xp: Arterial, Nerve, MSK, Venous

L38xp: Arterial, Nerve, Small Parts, Venous

POWER SUPPLY

System operates via battery or AC power
Rechargeable Lithium-ion Battery
Battery Life: 1.0 hour, 3 days on idle
Battery charges to 80% capacity in 3 hours

OTHER HIGHLIGHTS

Programmable Controls

Labeling: Predefined Labels, Customized Labels, Predefined Pictograms

Worksheets: Editable Acute Care Worksheets (ACEP Guidelines), Musculoskeletal Worksheets and customizable worksheets

Steep Needle Profiling Software

Embedded DVR (digital video recorder)*

Triple Transducer Connect*

Storage Basket*

Digital and VGA Video Out*

Auxiliary Transducer Holder*

AC Cord Retainer*

*Standard with X-Porte

ONBOARD IMAGE AND CLIP STORAGE REVIEW

2D Cine Review: 20 seconds
PW, CW, M-Mode Cine Review: 16 seconds
Internal Flash Memory: 64 GB
Thumbnail review of saved images and clips

Prospective and Retrospective Clip Store
Auto Clip Export (auto export to USB at end of study)
Video clip playback at 1, ½ or ¼ of the captured rate
Video Clip Save Lengths: 2, 4, 6, 10, 15, 30 and 60 seconds
Measure and calculate on recall
Annotations on recalled images
Image Format: JPEG, AVI, BMP
Export Format: HTML
JPEG Compression Options: High, Medium, Low

DATA MANAGEMENT AND CONNECTIVITY

5 USB 2.0 Ports
Ethernet Port
DVR USB Port
ECG Connector
Bar Code Auto-query (populates patient's demographic from worklist)
DICOM Image Management: Print, Store, Modality Worklist, Perform Procedure Step (PPS), Storage Commitment
Exam Routing: Diagnostic, Procedure, Education Exams
2.4 GHz and 5 GHz Wireless: 802.11 (B, G and N networking)
SonoSite Patient Data Archival Software (PDAS) for Wireless/Wired Image management
Telexy Qpath™ E exam management compatibility with remote worksheets

ACCESSORIES

Medical Grade Black and White Printer
USB Bar Code Reader
Footswitch
ECG Module
ECG Slave Cable

SUPPORTED LANGUAGES

English, French, Italian, Portuguese, Spanish, German

ONBOARD GUIDES

Ultrasound Imaging Basics, Packages for Acute Care, MSK, Procedures, Anesthesiology
Onboard System Help

Note: Desktop configuration available.

FUJIFILM
Value from Innovation

FUJIFILM SonoSite, Inc.

Worldwide Headquarters
21919 30th Drive SE, Bothell, WA 98021-3904
Tel: +1 (425) 951-1200 or +1 (877) 657-8050
Fax: +1 (425) 951-6800

www.sonosite.com/products/sonosite-x-porte

SonoSite Worldwide Offices

FUJIFILM SonoSite Australasia Pty Ltd: Australia 1300-663-516
FUJIFILM SonoSite Australasia Pty Ltd: New Zealand 0800-888-204
FUJIFILM SonoSite Brazil +55 11-5574-7747
FUJIFILM SonoSite Canada Inc. +1 888-554-5502
FUJIFILM (China) Investment Co., Ltd. +86 21-5010-6000
FUJIFILM SonoSite GmbH – Germany +49 69-80-88-40-30
FUJIFILM SonoSite, Inc. – USA +1 425-951-1200

FUJIFILM SonoSite India Pvt Ltd. +91 124-288-1100
FUJIFILM SonoSite Italy S.r.l. +39 02-9475-3655
FUJIFILM SonoSite Iberica SL – Spain +34 91-123-84-51
FUJIFILM SonoSite Japan K.K. +81 3-0418-7190
FUJIFILM SonoSite Korea Ltd +65 6380-5589
FUJIFILM SonoSite Ltd – United Kingdom +44 1462-341151
FUJIFILM SonoSite SARL – France +33 1-82-88-07-02

SONOSITE, the SONOSITE logo and X-PORTE are trademarks and registered trademarks of FUJIFILM SonoSite, Inc. in various jurisdictions.

FUJIFILM is a trademark and registered trademark of FUJIFILM Corporation in various jurisdictions.

All other trademarks are the property of their respective owners.

Copyright © 2018 FUJIFILM SonoSite, Inc. All rights reserved. Subject to change.

MKT02538 Rev. K 01/2018