

# Annual Report

Academic Year  
2020-2021

[cumming.ucalgary.ca/cme](http://cumming.ucalgary.ca/cme)



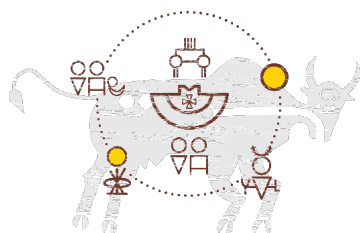
**UNIVERSITY OF CALGARY**  
CUMMING SCHOOL OF MEDICINE  
Continuing Medical Education  
and Professional Development

## Contents

Message from the Associate Dean .....	3
A Year in Summary .....	4
COVID CPD Response .....	5
Physician Learning Program .....	7
Provincial CPD Network .....	8
Physician Practice Improvement .....	9
CME Awards 2020-2021 .....	10
CME Awards 2019-2020 .....	11
CME&PD Partners .....	12

---

## Land acknowledgement



We acknowledge that we live and work in the traditional and present day territories of the people of the Treaty 7 region in Southern Alberta, which includes the Blackfoot Confederacy (comprising the Siksika, Piikani, and Kainai First Nations), as well as the Tsuut'ina First Nation, and the Stoney Nakoda (including the Chiniki, Bearspaw, and Wesley First Nations). The City of Calgary is also home to Métis Nation of Alberta, Region 3.

 [ii' taa'poh'to'p - Indigenous Strategy](#)

## Message from the Associate Dean



On behalf of our entire team, it is my great pleasure to provide you with this annual report for CME&PD. The past year has been one like we have never seen before, with the pandemic challenging us in every aspect of our personal and professional lives. In the face of rapidly advancing science, and ever evolving policies and recommendations, there has never been a greater need for trusted and timely information. Simply put, at no time in history has CME and CPD been needed more than it is right now.

I am very proud how our team at CME&PD and Physician Learning Program (PLP) overcame so many obstacles to help our clinicians navigate the COVID-19 “infodemic”. This past year, we saw registration to our education offerings increase by FIVE TIMES what we do in typical year. This was made possible by every single faculty member that volunteered their time to speak at our events and who served on our planning committees. I also want again thank the sponsors, and those individuals who donated to our Giving Campaign, as this support kept our Office sustainable through these difficult times.

Last year we worked with our system stakeholders to finalize the creation of a new Provincial CPD Network, which will formally launch this Fall. As CPD in Canada moves, in part, to competency-based CPD and the need for continuous quality improvement is mandated by CPSA, CME&PD and PLP will continue to support you in this transition in the years to come.

Finally, on a sad note, this will be my final Annual Report message as Associate Dean as my five year term ends on December 31, 2021. This role has been the most challenging of my academic career, but working with the talented and dedicated teams at CME&PD and PLP have also made it so rewarding. I can not thank them enough and I am so very proud of what we have accomplished together. I know that CME&PD and PLP at the Cumming School of Medicine will continue to be at the forefront of CPD in Canada for years to come, and it has been an honour to serve in this role.

With warm regards and sincere gratitude,

**Kelly W. Burak, MD, FRCPC, MSc (Epid)**

Associate Dean, Continuing Medical Education & Professional Development (CME&PD)

Co-Lead, Physician Learning Program (PLP)

Professor, Departments of Medicine and Oncology

Cumming School of Medicine, University of Calgary

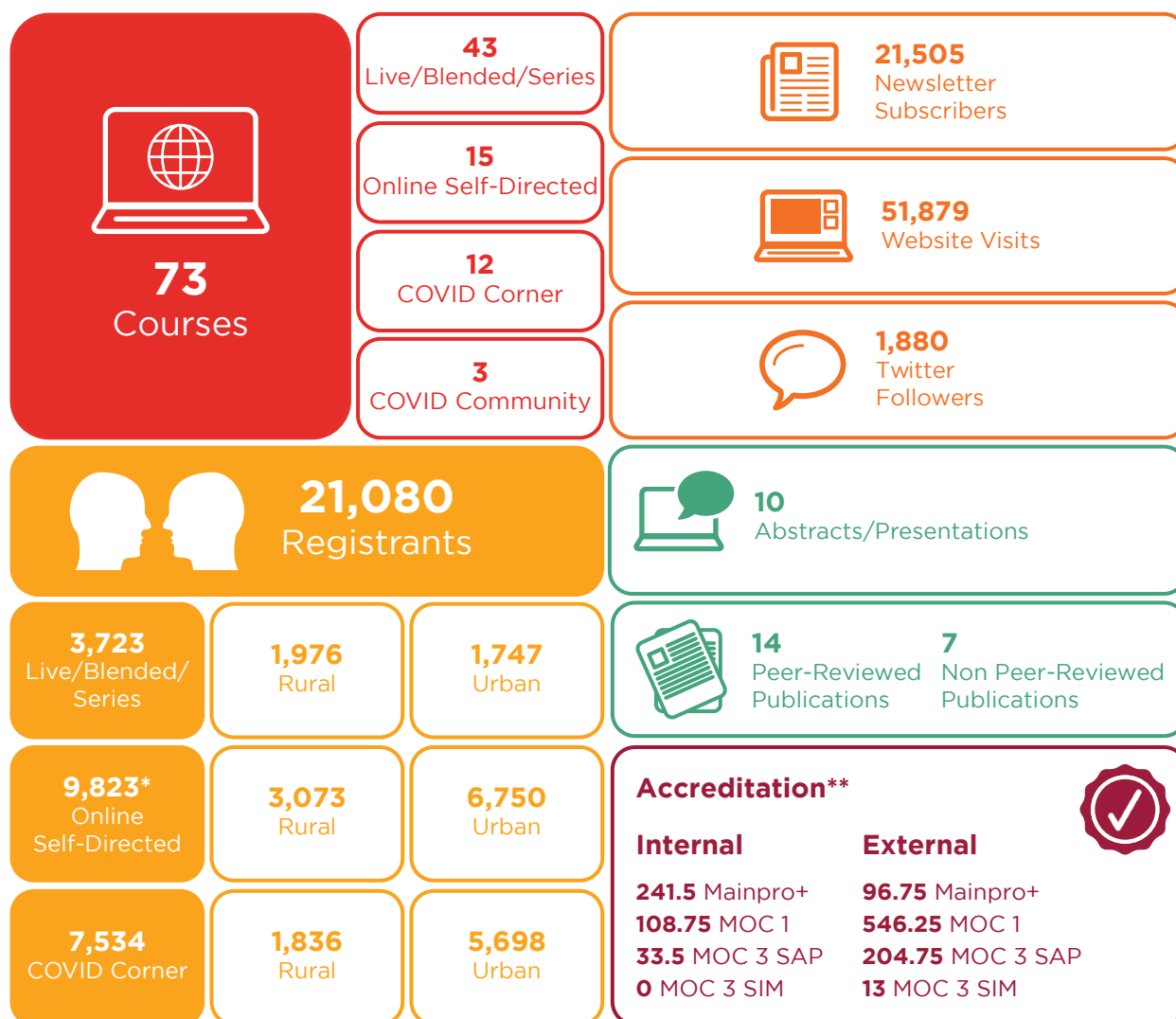
# A Year in Summary

## Vision

Inspiring excellence in continuing professional education, practice and research.

## Mission

To provide and coordinate integrated academic educational and assessment activities and resources that promote lifelong learning for healthcare professionals for excellence in clinical practice focused on improving health outcomes.



\*Includes 5,137 Patient Relation participants

\*\*Mainpro+ credits/MOC hours

## COVID CPD Response

Since March 2020, CME&PD quickly pivoted to developing and delivering high quality COVID-19 CPD for physicians and other healthcare professionals. CME&PD is a trusted source for the latest research and evidence-based education and training. We have covered topics such as patient management of COVID-19 in various settings from the community to the intensive care unit, addressing atypical presentations and long haulers, as well as mental health and wellness of patients and healthcare professionals during the pandemic.

These activities received an educational grant from the following organizations:



## COVID-19 CPD Offerings

March 2019 - June 2021





## COVID Community

CME&PD partnered with several Institutes at the University of Calgary to host webinars for members of the public, updating them on the latest information with regards to COVID-19, while highlighting the research and pandemic response of our Faculty.  
**Total Registrants: 1,245**

## COVID Community Partners



**UNIVERSITY OF CALGARY**  
O'Brien Institute for Public Health

Calvin, Phoebe and Joan  
**Snyder Institute**  
for Chronic Diseases

Alberta  
**Children's HOSPITAL**  
RESEARCH INSTITUTE

## Tools for Care of Patients with COVID-19

Through the pandemic, Physician Learning Program (PLP) co-developed several tools for care to assist in the management of patients with COVID-19. Just prior to the second wave, PLP and Department of Medicine updated an infographic on the management of inpatients with COVID-19 and launched this during COVID Corner.



[COVID-19 Tools](#)

# Physician Learning Program

## Vision

By 2025, all Alberta physicians will care for patients in a supportive culture, driven by evidence-informed, reflective practice improvement.

## Mission

PLP creates actionable clinical information and engages with physicians, teams, partners, and patients to co-create sustainable solutions to advance practice.

In 2020-2021, PLP and CME&PD collaborated on initiatives to engage physicians with clinically meaningful practice data at the 45th Annual Pearls for Family Practice, 38th Annual Calgary Therapeutics Course, and Calgary Liver Disease Course 2020.

## PLP Partners



**Annual Report  
2020-2021**



[Annual Report](#)



## Provincial CPD Network

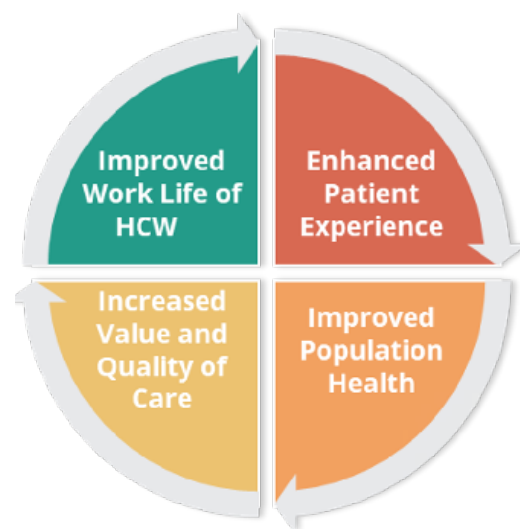
In 2019, the Future of Medical Education in Canada Continuing Professional Development (FMEC-CPD) released its report outlining 11 recommendations for the revitalization of the CPD system ([www.fmec-cpd.ca](http://www.fmec-cpd.ca)). The following year, the Offices of CME&PD and Lifelong Learning at the University of Alberta, along with the Physician Learning Program (PLP) and other key stakeholders, created the Provincial CPD Network addressing Recommendation 11 “to facilitate the monitoring, planning and evaluation of educational interventions required to address patient, community, and population health needs and priorities using the best available evidence”. Governed by its Steering Committee members from key system stakeholders, its objective is to deliver on the Quadruple Aim - improving healthcare delivery by enhancing patient experiences in an efficient and sustainable system, which also improves the work-life balance for healthcare providers.

Beginning in fall 2021, five working groups will be established focused on development, integration and implementation of common goals, which will allow physicians to complete continuous cycles of quality improvement.

1. Data and Information
2. Engagement and Culture
3. Credentialing
4. Coaching and Quality Improvement
5. Performance Measurement and Evaluation



**Stakeholder Map**



**Quadruple Aim**

## Physician Practice Improvement



**PPIP Cycle**

In 2021, the College of Physicians and Surgeons of Alberta launched its Physician Practice Improvement Program (PPIP) which requires physicians to incorporate three continuous quality improvement activities into their practice, at least once over a five-year cycle. (<https://cpsa.ca/physicians-competence/ppip/>).

- Practice-driven quality improvement activity using objective data
- CPSA Standard of Practice quality improvement activity
- Personal development or wellness activity

### Supporting your CPD and QI journey

CME&PD and Physician Learning Program (PLP) are enhancing our tools and services to ensure physicians and healthcare teams are equipped to meet these continuous quality improvement requirements. We will use our expertise to offer multi-faceted continuing professional development activities using evidence-based and objective data to guide self-reflection and development of learning plans to foster practice change and support quality health care.

## CME Awards 2020-2021



Dr. Norm Shachar Long-Service  
Awards in CME&PD



**Diane Simpson**  
PhD, MDE



**Kathy Lee**  
BScPharm, PharmD

**Congratulations to our  
2020 - 2021 CME Awards Winners**



New Teacher of the Year Awards



**Craig Jenne**  
PhD



**Ryan Hoskins**  
MD, MSc, DTM&H, CCFP



CME Top Teacher Awards



**Jim Kellner**  
MD, FRCPC



**Cora Constantinescu**  
BSc, MD, FRCPC



Dr. Jocelyn Lockyer  
CPD Scholarship Award



**Lara Cooke**  
MD, MSc, FRCPC



CME Course Innovation Award

**Pearls for Family Practice Course**

Scientific Planning Committee



**Erika Fridfinnson**  
MD, CCFP



**Tina Nicholson**  
MD, CCFP



**Lisa Stevenson**  
MD, CCFP



**Ashi Mehta**  
MD, MSc, BSc



**Dana Young**  
MC



**Joan Knight**  
MD, CCFP



**Ian Johnston**  
MBChB, BSc



CME Course Innovation Award

**Tips, Pearls and New Approaches for  
Ultrasound Guided Nerve Blocks**



**Ryan Endersby**  
MD, FRCPC, LMCC



**Esther Ho**  
PhD, MDE

## CME Awards 2019-2020



Dr. Norm Shachar Long-Service  
Awards in CME&PD



**Jerry Pelletier**



**Joan Knight**

**Congratulations to our  
2019 - 2020 CME Awards Winners**



New Teacher of the Year Award



**Justin Chia**



CME Top Teacher Awards



**Shawn Dowling**



**Lynora Saxinger**



Dr. Jocelyn Lockyer  
CPD Scholarship Award

**NEW!**



**Jocelyn Lockyer**



CME Course Innovation Award

**Personal Protective Equipment  
Certification Course**

Scientific Planning Committee



**Ghazwan Altabbaa**



**Douglas Woodhouse**



**Rahim Kachra**



**Irene Ma**



**Chloe Burnett**

## CME&PD Partners



### Alberta Health Services (AHS)

AHS is Canada's first and largest province wide, fully-integrated health system, responsible for delivering health services to the over four million people living in Alberta.



### Alberta Medical Association (AMA)

The AMA advances patient-centered, quality care by advocating for and supporting physician leadership and wellness.



### Choosing Wisely Alberta (CWA) | Choosing Wisely Canada (CWC)

CWC launched on April 2, 2014, to help clinicians and patients engage in conversations about unnecessary tests and treatments. In 2018, CWA relaunched as a new partnership with the AMA, AH, AHS, CPSA with CME&PD hosting the CWA Provincial Coordinator.



### College of Physicians and Surgeons of Alberta (CPSA)

The CPSA regulates the practice of medicine in Alberta. The privilege of profession-led self-regulation is granted through Alberta's Health Professions Act.



### Rural Health Professionals Action Plan (RhPAP)

Established in 1991 by the Government of Alberta, RhPAP is a collaborative partner and trusted advocate for rural Alberta communities trying to achieve greater access to health care.

**Thank You!**

### Individual donors to the Giving Campaign

Thank you for helping us provide COVID-19 education, training and resources for health care professionals.

<https://engage.ucalgary.ca/cmedonations>

## How can I get involved and earn CPD credits?

- Volunteer as a planning committee member
- Share your expertise as a speaker
- Become a coach for your peers

**For more information contact us!**

---

### Contact Us

TRW Building  
3280 Hospital Drive NW  
Calgary, Alberta T2N 4Z6

**Email:** [CME@ucalgary.ca](mailto:CME@ucalgary.ca)

**Phone:** 403.220.7240

**Fax:** 403.210.9247



@CME\_UofC



@UofC.CME