

## Patient Handout for WIXELA INHUB<sup>®</sup>

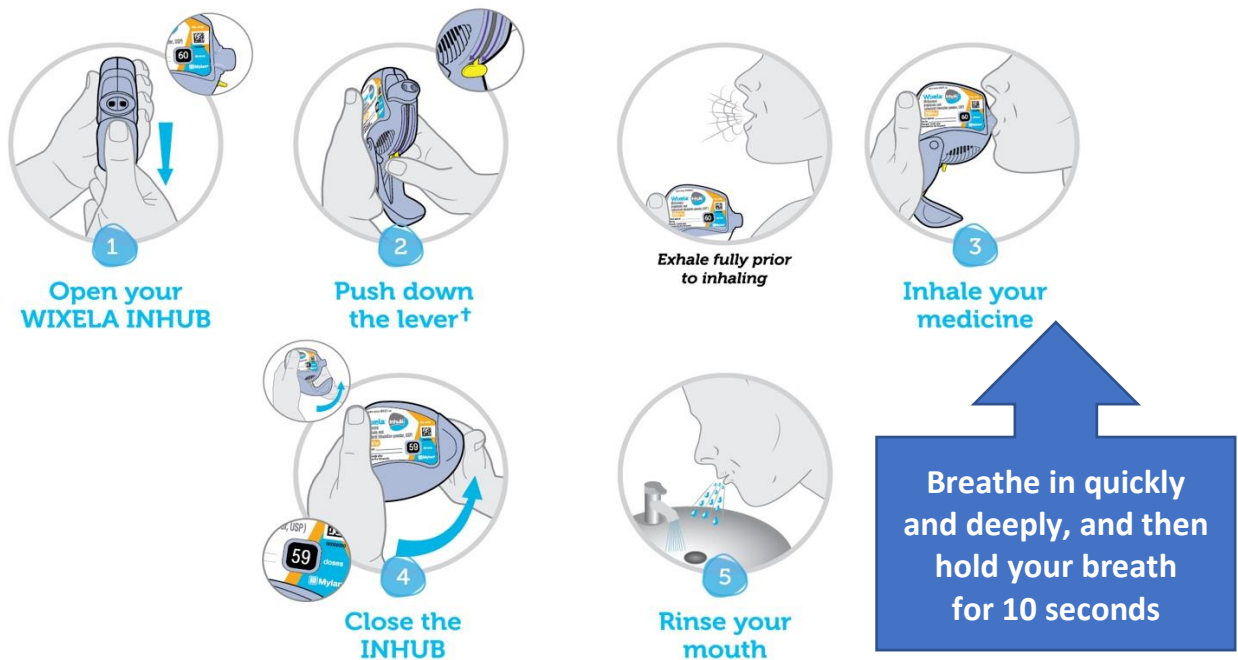
**\*\*This handout is ONLY for patients who were using ADVAIR DISKUS<sup>®</sup> before their hospital stay\*\***

WIXELA INHUB<sup>®</sup> is the generic version of ADVAIR DISKUS<sup>®</sup> (fluticasone propionate-salmeterol) that is supplied by the hospital.

Although WIXELA INHUB<sup>®</sup> looks different than ADVAIR DISKUS<sup>®</sup> (see pictures below), it contains the same medicines so you can expect it to work just as well and to be just as safe.



The steps for using WIXELA INHUB<sup>®</sup> are very similar to those for ADVAIR DISKUS<sup>®</sup> (see steps below).



**†For Steps 1 to 3: Hold WIXELA INHUB<sup>®</sup> in the VERTICAL position.**

Since WIXELA INHUB<sup>®</sup> and ADVAIR DISKUS<sup>®</sup> contain the same medicines, **do not** use both inhalers at the same time.

Please talk to your health care team if you have any questions about your inhalers.