

# Step 1: How to create a patient account

You will receive an e-mail from your nurse/doctor with the title "Your care provider invites you to join diasend®".

Click on the link in this e-mail that says [Click here to get started](#) and follow the steps below.

If you haven't received an e-mail, you can always create an account by clicking the "Register here" button at [www.diasend.com](http://www.diasend.com).

## 1 Login details

Enter your email address, which will be your username, as well as a password of your choosing for your diasend® Personal account. Click continue.

## 2 Personal information

Enter your personal information then click continue.

## 3 Share data

If you received an invite from your care provider via e-mail, the Clinic ID number will already be filled in. This is the unique ID number for your clinic which makes it possible for you to share your data with them. Click continue.

If you didn't receive an invite, you can add this Clinic ID later. Finish the registration, then log in to your account and go to the "Account admin" tab.

## 4 Confirm registration

Check the box to approve terms and conditions and confirm the registration. Click continue.

## 5 Download and install diasend® Uploader

Install diasend® Uploader on your PC or Mac, by clicking on the relevant icon. Follow the installation instructions on the screen.



# Step 2: How to start uploading data to diasend®

1

## Start diasend® Uploader

Double click on the diasend® Uploader icon on your computer (if you have a Mac please go to the "applications folder" or "launchpad" to find diasend® Uploader).

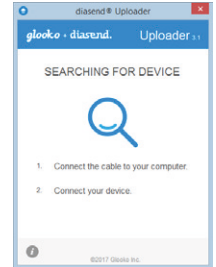


2

## Connect the device cable

Connect the cable for your device to a USB port on your computer.

*NOTE: To download data from an Omnipod® PDM to a Mac computer manufactured before mid 2012, running OS X El Capitan, it is recommended that you use a USB hub.*

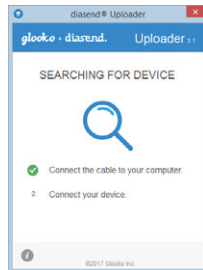


3

## Connect your device to the cable

Connect the device to the cable or place it in front of an IR dongle.

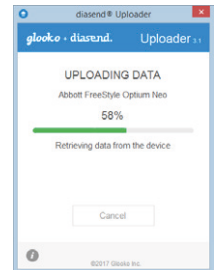
*NOTE: For specific instructions on how to upload your device use the diasend® Personal Quickguide at support.diasend.com.*



4

## Device will start to upload

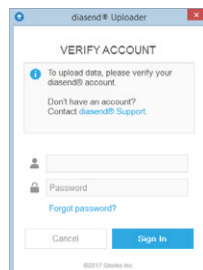
Do not unplug your device until the uploading process is completed.



5

## Verify your account

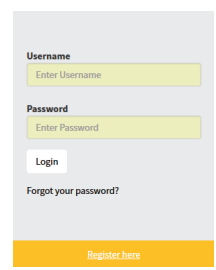
Enter your username (entire email address and the password you created when registering for your account). Click Sign in.



6

## View your data

Log in at [www.diasend.com](http://www.diasend.com) and view your data.



## Examples of reports and charts

